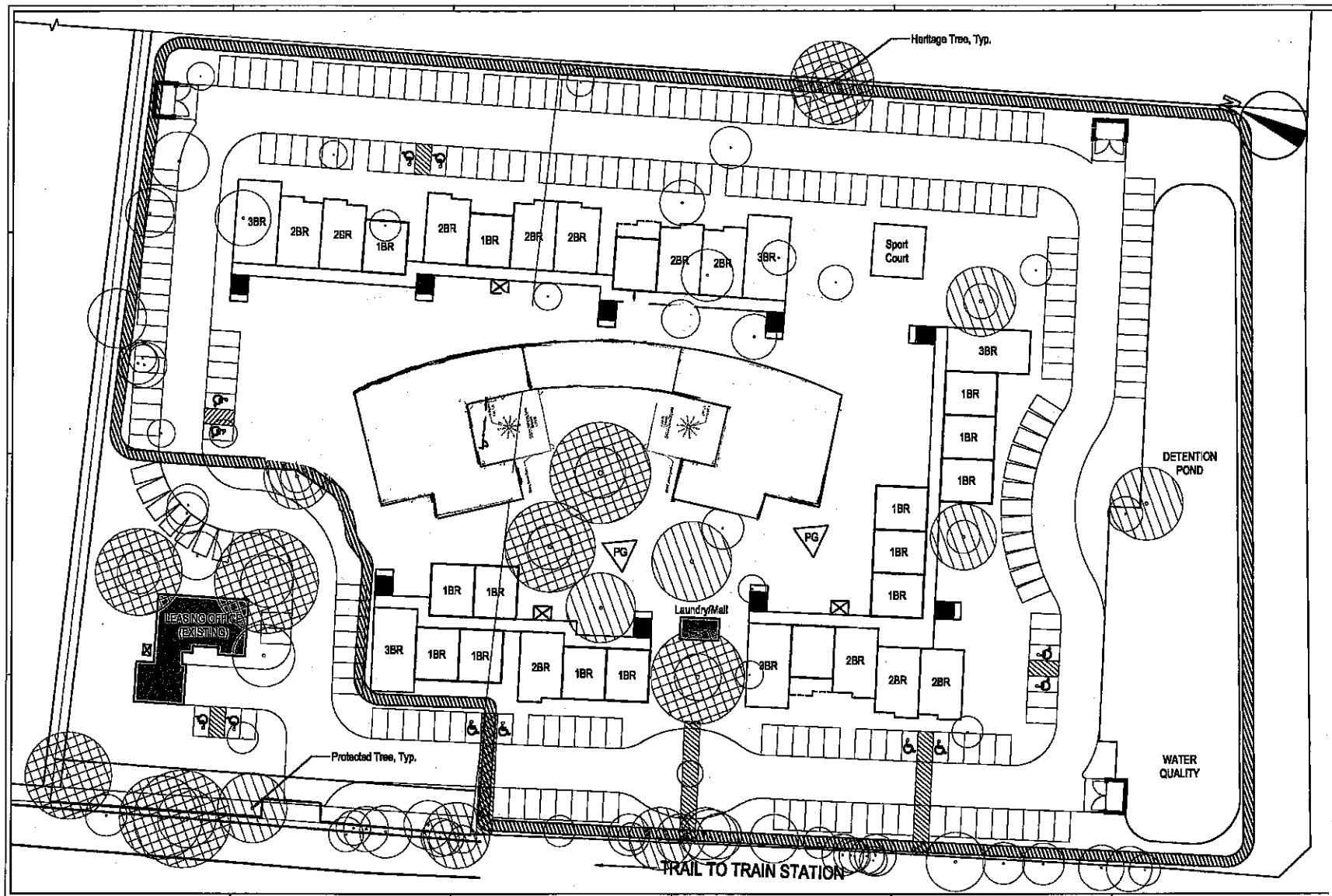
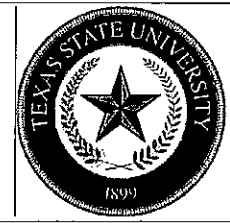


- A-101 Cover/Site Plan
- A-102 Code/Egress Plan
- A-103 Dimensioned Floor Plan
- A-104 Furniture Plan
- A-105 Reflected Ceiling Plan
- A-106 Power/Signal Plan
- A-107 Lighting Plan
- A-108 Floor Finish Plan
- A-109 Wall Finish Plan
- A-110 Section Detail
- A-111 Custom Component Detail
- A-112 Wall Detail
- A-113 Floor Finish Specifications
- A-114 Wall Finish Specifications
- A-115 Light Specifications
- A-116 Furniture Specifications

LAKELINE STATION LEARNING CENTER



1 Site Plan
1/32" = 1'-0"



TEXAS STATE UNIVERSITY
DEPARTMENT OF INTERIOR DESIGN

LAKELINE LEARNING CENTER

Austin, Texas

Drawn by:
Colette King & Lacey Stewart

**NOT FOR
CONSTRUCTION**

- A-101 Cover/Site Plan
- A-102 Code/Egress Plan
- A-103 Dimensioned Floor Plan
- A-104 Furniture Plan
- A-105 Reflected Ceiling Plan
- A-106 Power/Signal Plan
- A-107 Lighting Plan
- A-108 Floor Finish Plan
- A-109 Wall Finish Plan
- A-110 Section Detail
- A-111 Custom Detail
- A-112 Wall Detail

Date: December 2, 2014
Drawn By: CAK & LAS
Checked By: Brudno

A-101

Scale: 1/32" = 1'-0"

LAKELINE STATION LEARNING CENTER

TABLE OF CONTENTS

- A-101 Cover/Site Plan
- A-102 Code/Egress Plan
- A-103 Dimensioned Floor Plan
- A-104 Furniture Plan
- A-105 Reflected Ceiling Plan
- A-106 Power/Signal Plan
- A-107 Lighting Plan
- A-108 Floor Finish Plan
- A-109 Wall Finish Plan
- A-110 Section Detail
- A-111 Custom Component Detail
- A-112 Wall Detail
- A-113 Floor Finish Specifications
- A-114 Wall Finish Specifications
- A-115 Light Specifications
- A-116 Furniture Specifications



TEXAS STATE UNIVERSITY
DEPARTMENT OF INTERIOR DESIGN

LAKELINE LEARNING CENTER

Austin, Texas

Drawn by:
Colette King & Lacey Stewart

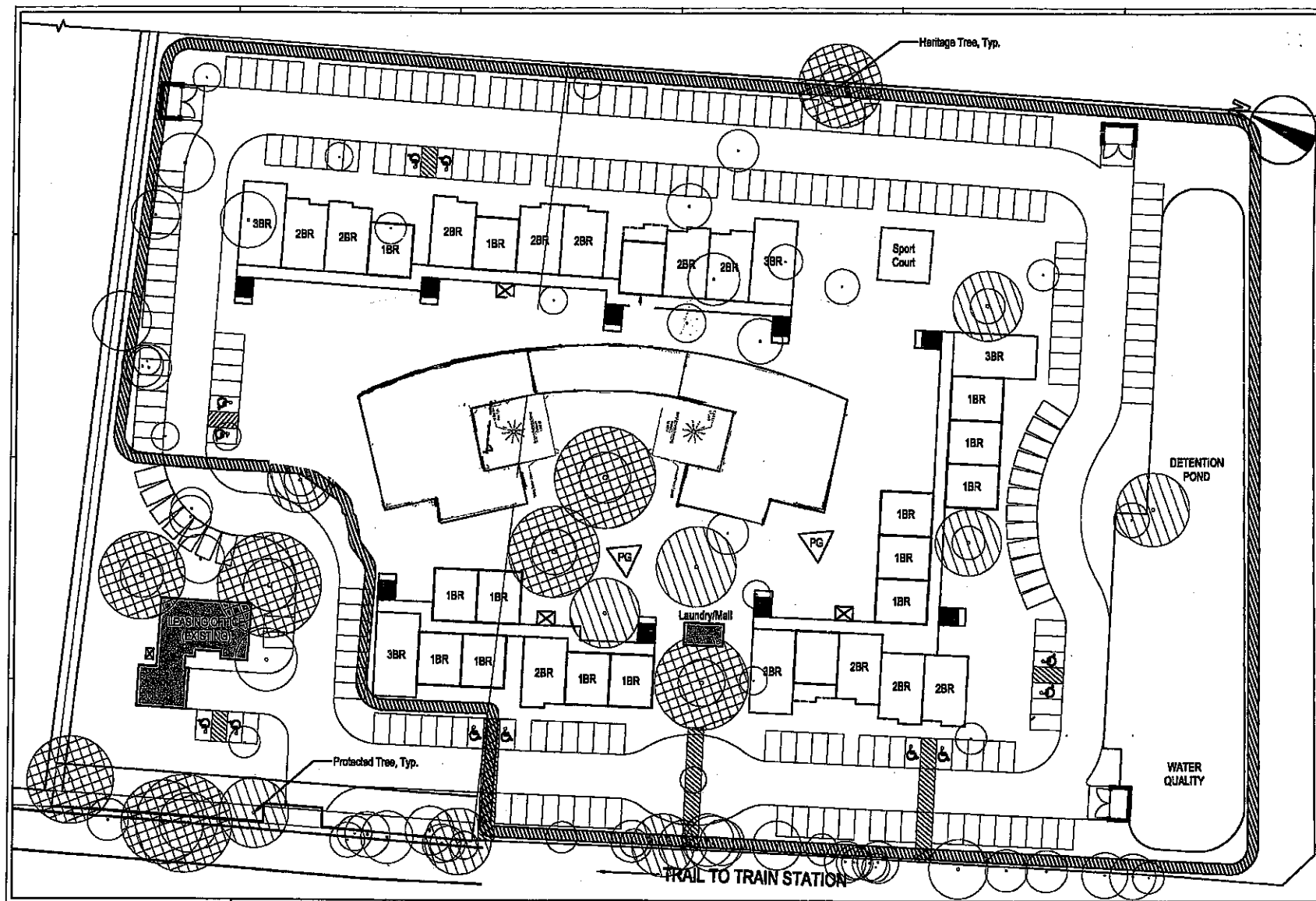
NOT FOR CONSTRUCTION

- A-101 Cover/Site Plan
- A-102 Code/Egress Plan
- A-103 Dimensioned Floor Plan
- A-104 Furniture Plan
- A-105 Reflected Ceiling Plan
- A-106 Power/Signal Plan
- A-107 Lighting Plan
- A-108 Floor Finish Plan
- A-109 Wall Finish Plan
- A-110 Section Detail
- A-111 Custom Detail
- A-112 Wall Detail

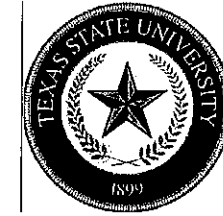
Date December 2, 2014
Drawn By CAK & LAS
Checked By Btudno

A-101

Scale 1/32" = 1'-0"



Site Plan
1/32" = 1'-0"



TEXAS STATE UNIVERSITY
DEPARTMENT OF INTERIOR DESIGN

LAKELINE COMMUNITY CENTER

Austin, Texas

Drawn by:
Colette King & Lacey Stewart

**NOT FOR
CONSTRUCTION**

- A-101 Cover/Site Plan
- A-102 Egress/Code Plan
- A-103 Dimensioned Floor Plan**
- A-104 Furniture Plan
- A-105 Reflected Ceiling Plan
- A-106 Power/Signal Plan
- A-107 Lighting Plan
- A-108 Floor Finish Plan
- A-109 Wall Finish Plan
- A-110 Section Detail
- A-111 Custom Detail
- A-112 Wall Detail

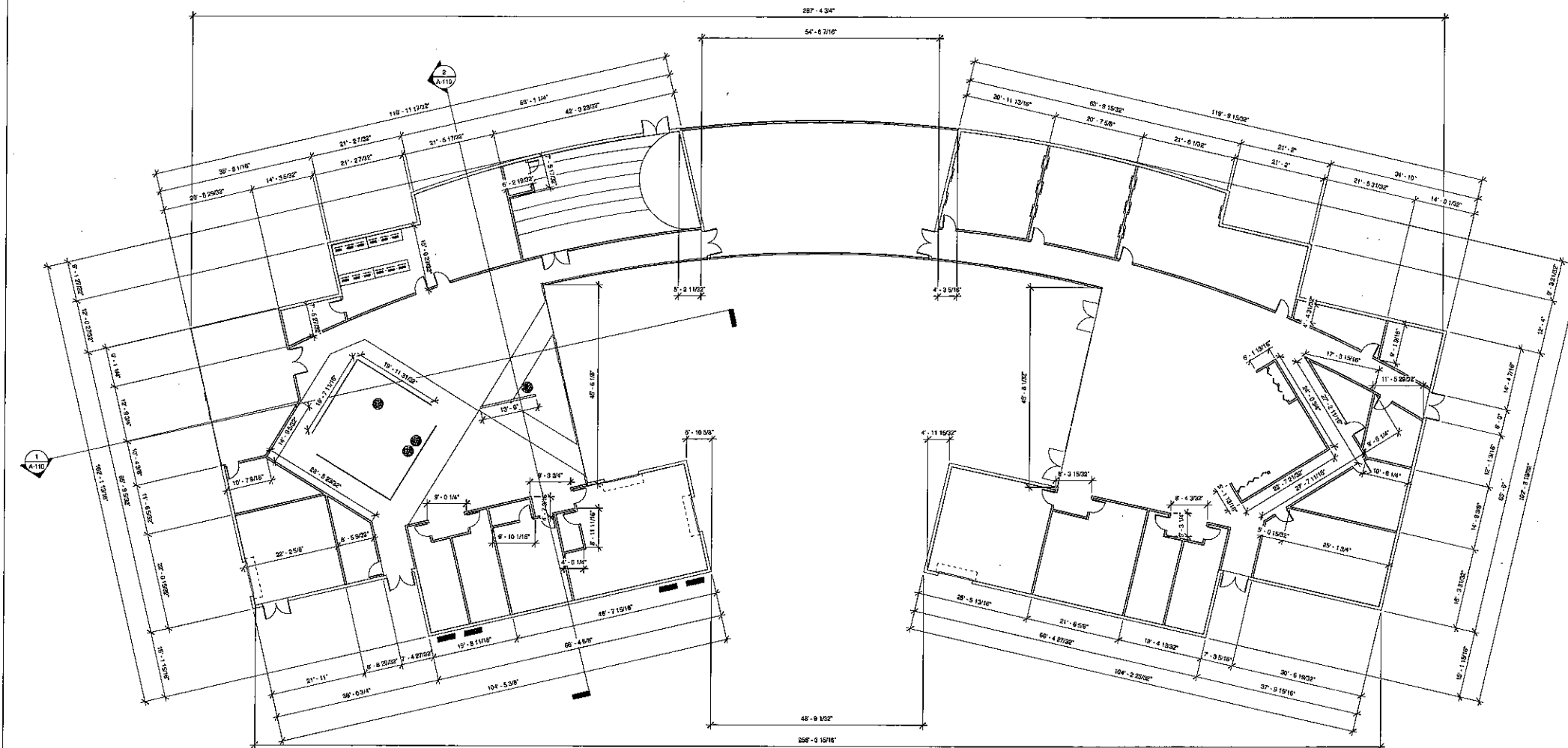
Date December 2, 2014

Drawn By CAK & LAS

Checked By Brudno

A-103

Scale 3/32" = 1'-0"


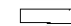





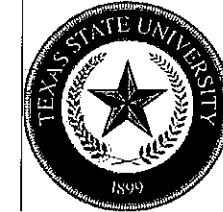
① A-103 Lakeline Dimensioned Plan
3/32" = 1'-0"

General Notes:

All Exterior Walls = 8"
All Interior Walls = 5"
Unless otherwise noted

Symbol Key:

-  New Structural Walls
-  Existing Structural Walls
-  1-HR Fire Rated Wall (see sheet A-112)
-  2-HR Fire Rated Wall (see sheet A-112)
-  Section Symbol



TEXAS STATE UNIVERSITY
DEPARTMENT OF INTERIOR DESIGN

LAKELINE COMMUNITY CENTER

Austin, Texas

Drawn by:
Colette King & Lacey Stewart

**NOT FOR
CONSTRUCTION**

- A-101 Cover/Site Plan
- A-102 Egress/Code Plan
- A-103 Dimensioned Floor Plan
- A-104 Furniture Plan**
- A-105 Reflected Ceiling Plan
- A-106 Power/Signal Plan
- A-107 Lighting Plan
- A-108 Floor Finish Plan
- A-109 Wall Finish Plan
- A-110 Section Detail
- A-111 Custom Detail
- A-112 Wall Detail

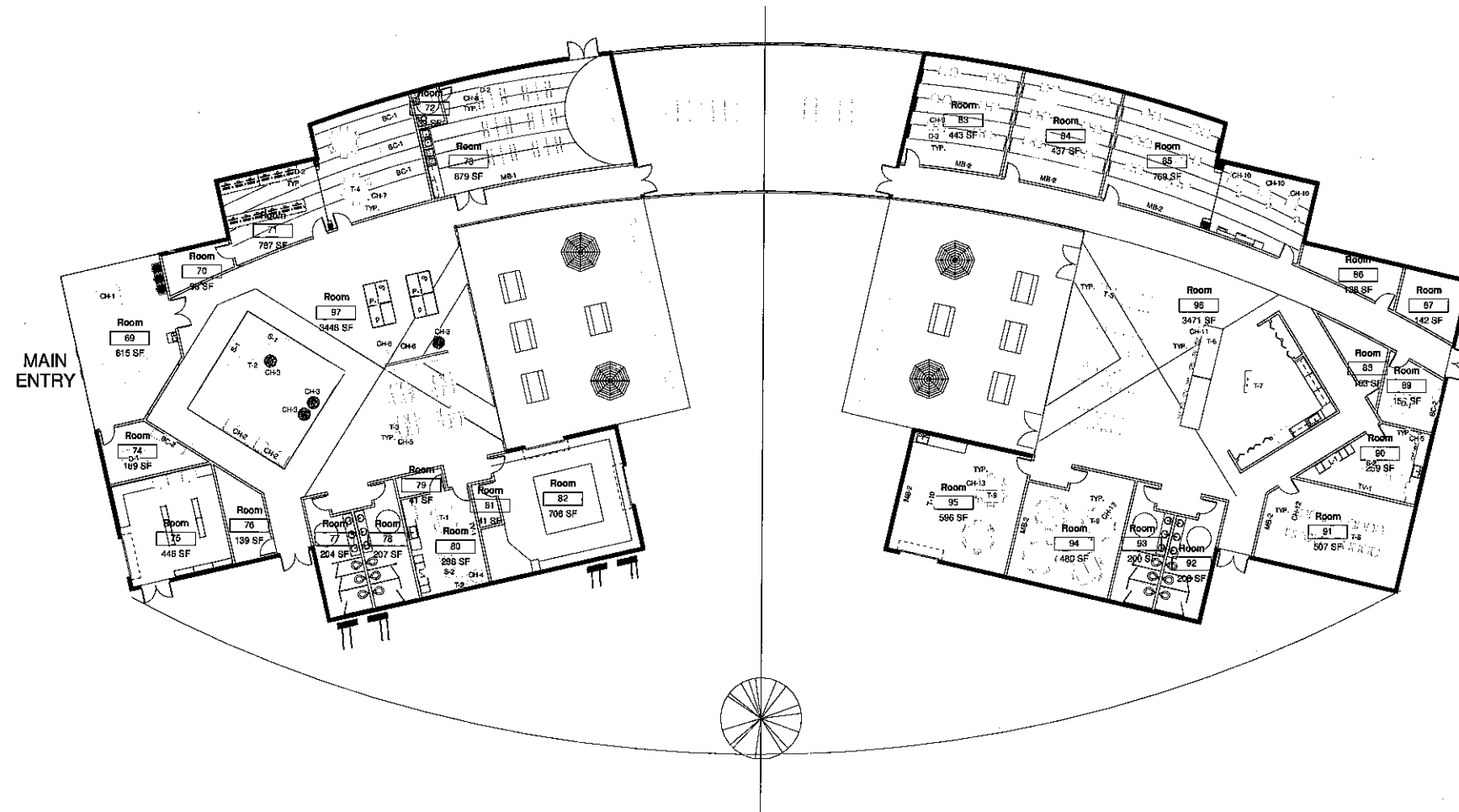
Date December 2, 2014

Drawn By CAK & LAS

Checked By Brudno

A-104

Scale 3/32" = 1'-0"



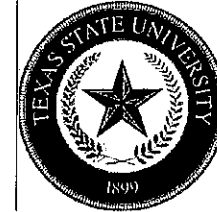
① A101 Lakeline Ancillary Furniture Plan
3/32" = 1'-0"

General Notes:

Refer to Furniture Specification Plan
for More Information
TYP: Typical arrangement for identical
instances

Symbol Key:

BC: Bookcase
CH: Chair
D: Desk
L: Lockers
MB: Markerboard
P: Ping Pong Table
S: Sofa
T: Table
TV: Television



TEXAS STATE UNIVERSITY
DEPARTMENT OF INTERIOR DESIGN

LAKELINE LEARNING CENTER

Austin, Texas

Drawn by:
Colette King & Lacey Stewart

**NOT FOR
CONSTRUCTION**

- A-101 Cover/Site Plan
- A-102 Code/Egress Plan
- A-103 Dimensioned Floor Plan
- A-104 Furniture Plan
- A-105 Reflected Ceiling Plan**
- A-106 Power/Signal Plan
- A-107 Lighting Plan
- A-108 Floor Finish Plan
- A-109 Wall Finish Plan
- A-110 Section Detail
- A-111 Custom Detail
- A-112 Wall Detail

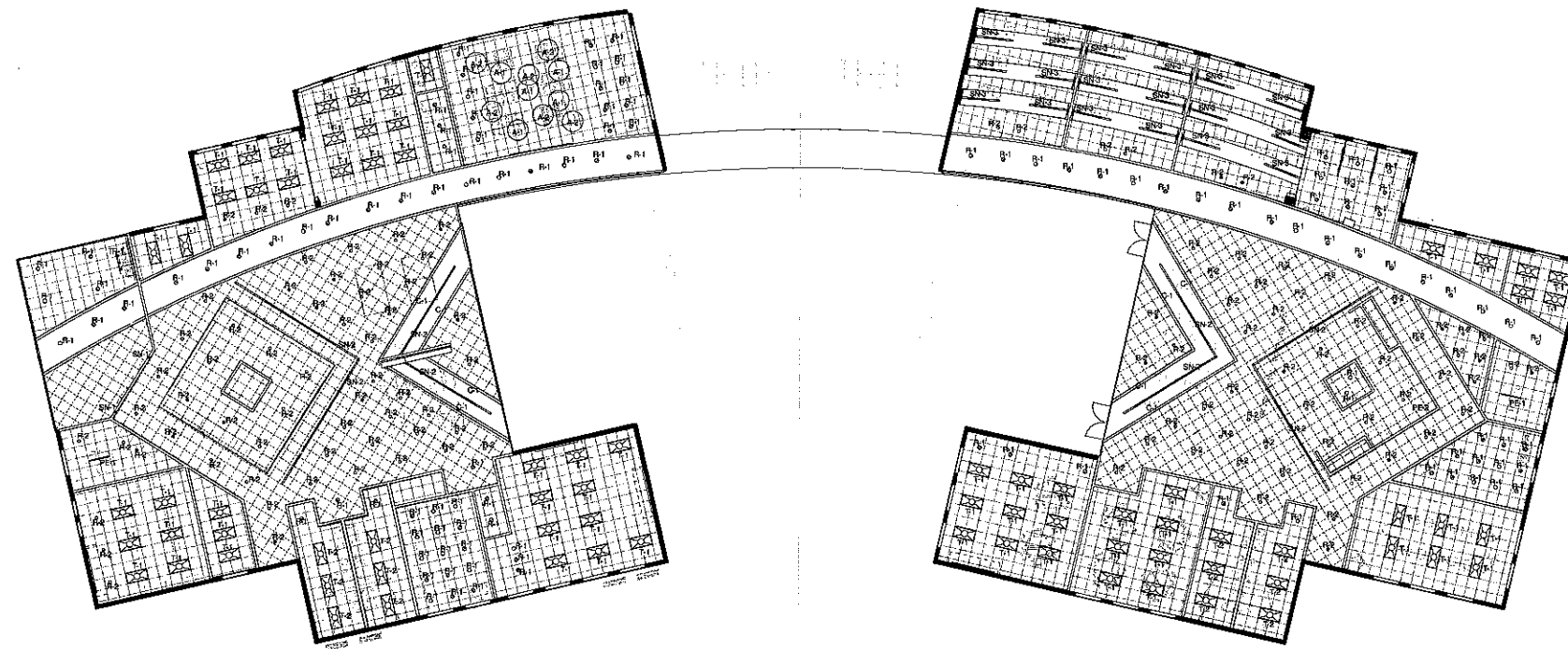
Date December 2, 2014

Drawn By CAK & LAS

Checked By Brudno

A-105

Scale 3/32" = 1'-0"



① A-105 Lakeline Ceiling Plan
3/32" = 1'-0"

General Notes:

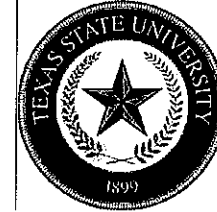
Refer to lighting/finish specification for more information.

Symbol Key:

- PE: Pendant Light Fixture
- F: Fluorescent 2x4 Light Fixture
- R: Recessed Light Fixture
- SN: Strip Lighting Fixture
- TR: Track Lighting Fixture
- C: Cove Lighting Fixture
- SN: Strip Lighting Fixture
- A: Armstrong Acoustical Panels

Ceiling Type Key:

- Ceiling Height Change
- ▨ Acoustical 2x2 Tile
- Gypsum Wall Board



TEXAS STATE UNIVERSITY
DEPARTMENT OF INTERIOR DESIGN

LAKELINE COMMUNITY CENTER

Austin, Texas

Drawn by:
Colette King & Lacey Stewart

**NOT FOR
CONSTRUCTION**

- A-101 Cover/Site Plan
- A-102 Egress/Code Plan
- A-103 Dimensioned Floor Plan
- A-104 Furniture Plan
- A-105 Reflected Ceiling Plan
- A-106 Power/Signal Plan**
- A-107 Lighting Plan
- A-108 Floor Finish Plan
- A-109 Wall Finish Plan
- A-110 Section Detail
- A-111 Custom Detail
- A-112 Wall Detail

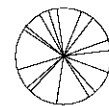
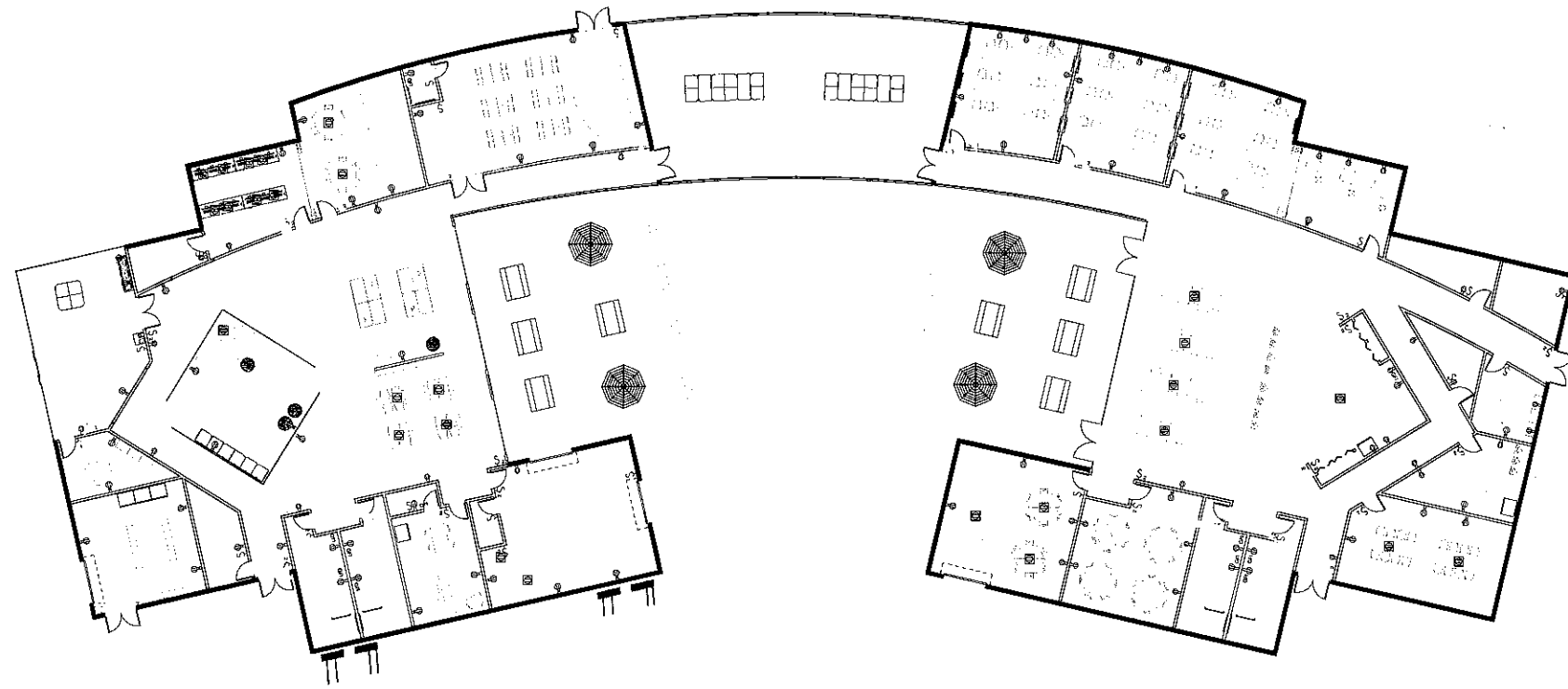
Date December 2, 2014

Drawn By CAK & LAS

Checked By Brucino

A-106

Scale 3/32" = 1'-0"



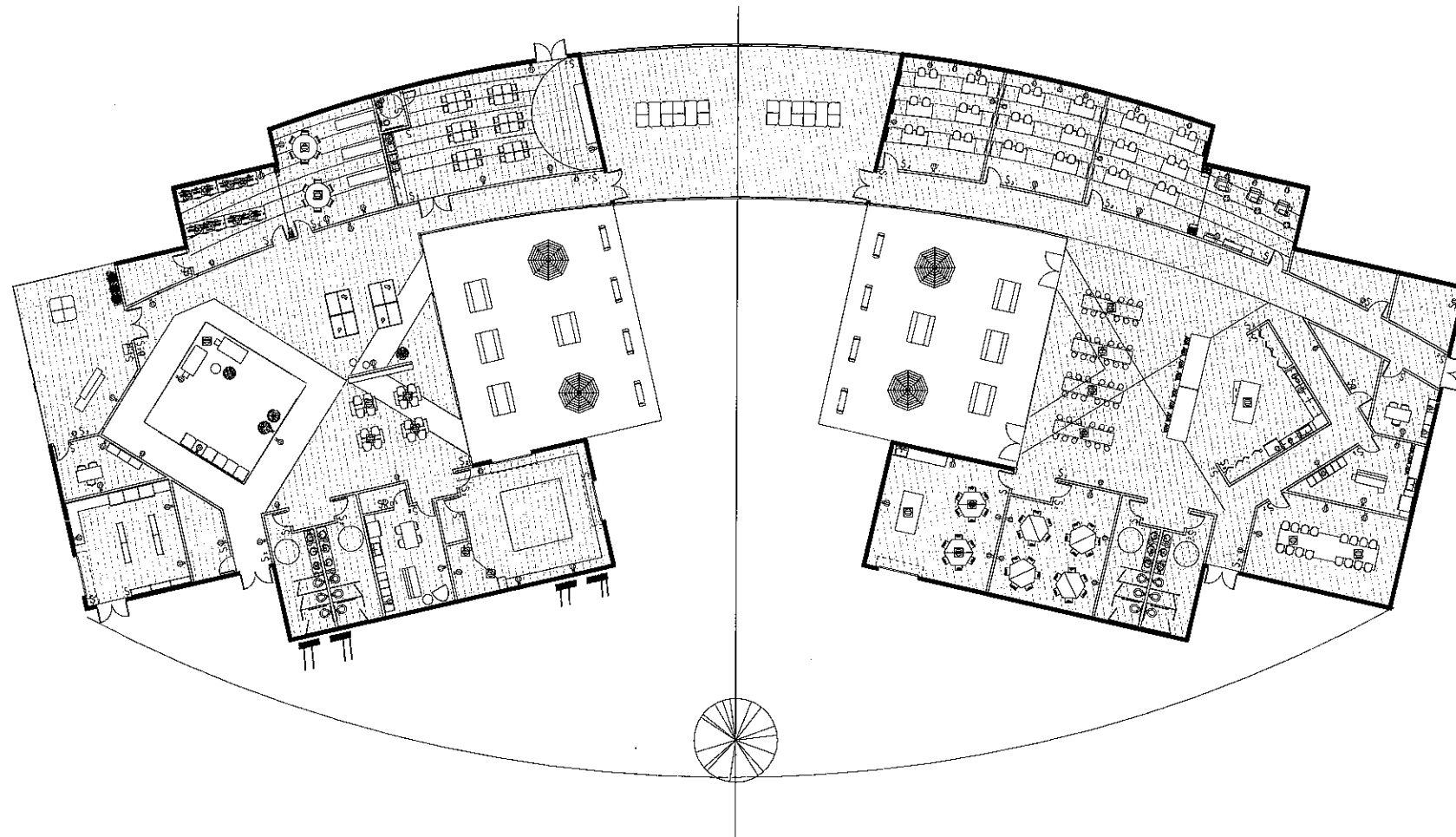
① A-106 Lakeline Power/Signal Plan
3/32" = 1'-0"

GENERAL NOTES:

CTR: Counter height outlet, 36" AFF
TV outlets: 72" AFF
All outlets 18" AFF unless noted differently

SYMBOL KEY:

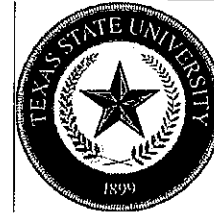
- Ⓜ Duplex Receptacle Outlet
- Ⓜc Counter Height Duplex Receptacle Outlet
- ⓂG Ground Fault Interrupter Outlet
- ⓂSR Quadruplex Receptacle Outlet
- ⓂF Floor Duplex Receptacle Outlet
- Ⓜ J Box
- Ⓜ Telephone Outlet- Data
- Ⓜ Card Reader



① A-108 Lakeline Lighting Plan
3/32" = 1'-0"

General Notes:
All switches are 48" AFF unless otherwise noted.

Symbol Key:
S₁ Single Switch
S₂ Double Switch



TEXAS STATE UNIVERSITY
DEPARTMENT OF INTERIOR DESIGN

LAKELINE COMMUNITY CENTER

Austin, Texas

Drawn by:
Colette King & Lacey Stewart

**NOT FOR
CONSTRUCTION**

- A-101 Cover/Site Plan
- A-102 Egress/Code Plan
- A-103 Dimensioned Floor Plan
- A-104 Furniture Plan
- A-105 Reflected Ceiling Plan
- A-106 Power/Signal Plan
- A-107 Lighting Plan**
- A-108 Floor Finish Plan
- A-109 Wall Finish Plan
- A-110 Section Detail
- A-111 Custom Detail
- A-112 Wall Detail

Date: December 2, 2014
Drawn By: CAK & LAS
Checked By: Brudno

A-107

Scale: 3/32" = 1'-0"



TEXAS STATE UNIVERSITY
DEPARTMENT OF INTERIOR DESIGN

LAKELINE LEARNING CENTER

Austin, Texas

Drawn by:
Colette King & Lacey Stewart

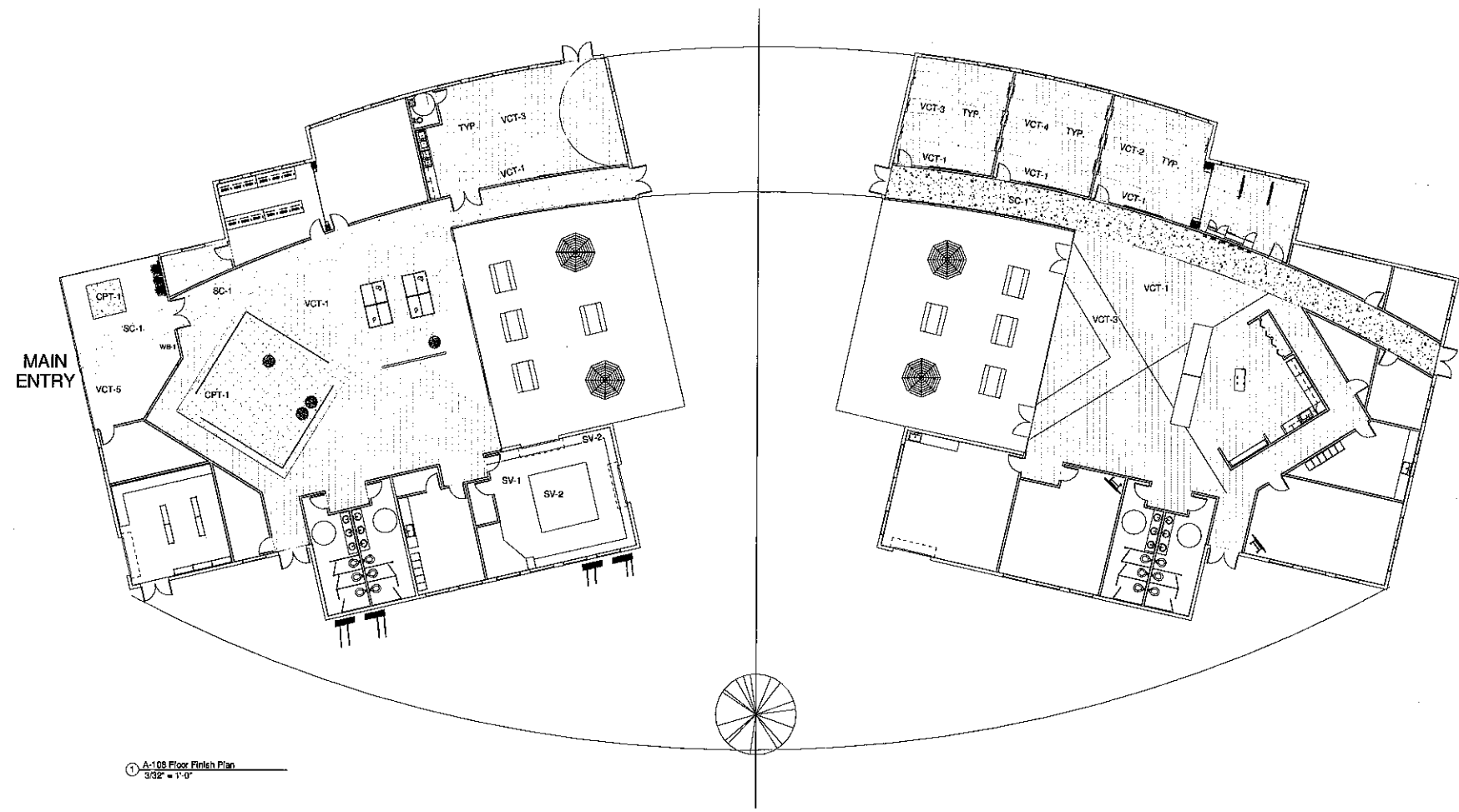
**NOT FOR
CONSTRUCTION**

- A-101 Cover/Site Plan
- A-102 Code/Egress Plan
- A-103 Dimensioned Floor Plan
- A-104 Furniture Plan
- A-105 Reflected Ceiling Plan
- A-106 Power/Signal Plan
- A-107 Lighting Plan
- A-108 Floor Finish Plan**
- A-109 Wall Finish Plan
- A-110 Section Detail
- A-111 Custom Detail
- A-112 Wall Detail

Date: December 2, 2014
 Drawn By: GAK & LAS
 Checked By: Erudno

A-108

Scale: 3/32" = 1'-0"



① A-108 Floor Finish Plan
3/32" = 1'-0"

General Notes:

1. VCT-1 is default floor finish if not specified
2. RB-1 is default baseboard unless otherwise noted
3. Refer to Finish Specifications for more information
4. TYP. is typical arrangement for identical instances

Transition to different material

Symbol Key:

- CPT-Carpet Tile
- SC-Stained Concrete
- VCT-Vinyl Composition Tile
- SV-Steel Vinyl
- RB-Rubber Baseboard
- WB-Wood Baseboard



TEXAS STATE UNIVERSITY
DEPARTMENT OF INTERIOR DESIGN

LAKELINE COMMUNITY CENTER

Austin, Texas

Drawn by:
Colette King & Lacey Stewart

**NOT FOR
CONSTRUCTION**

- A-101 Cover/Site Plan
- A-102 Egress/Code Plan
- A-103 Dimensioned Floor Plan
- A-104 Furniture Plan
- A-105 Reflected Ceiling Plan
- A-106 Power/Signal Plan
- A-107 Lighting Plan
- A-108 Floor Finish Plan
- A-109 Wall Finish Plan**
- A-110 Section Detail
- A-111 Custom Detail
- A-112 Wall Detail

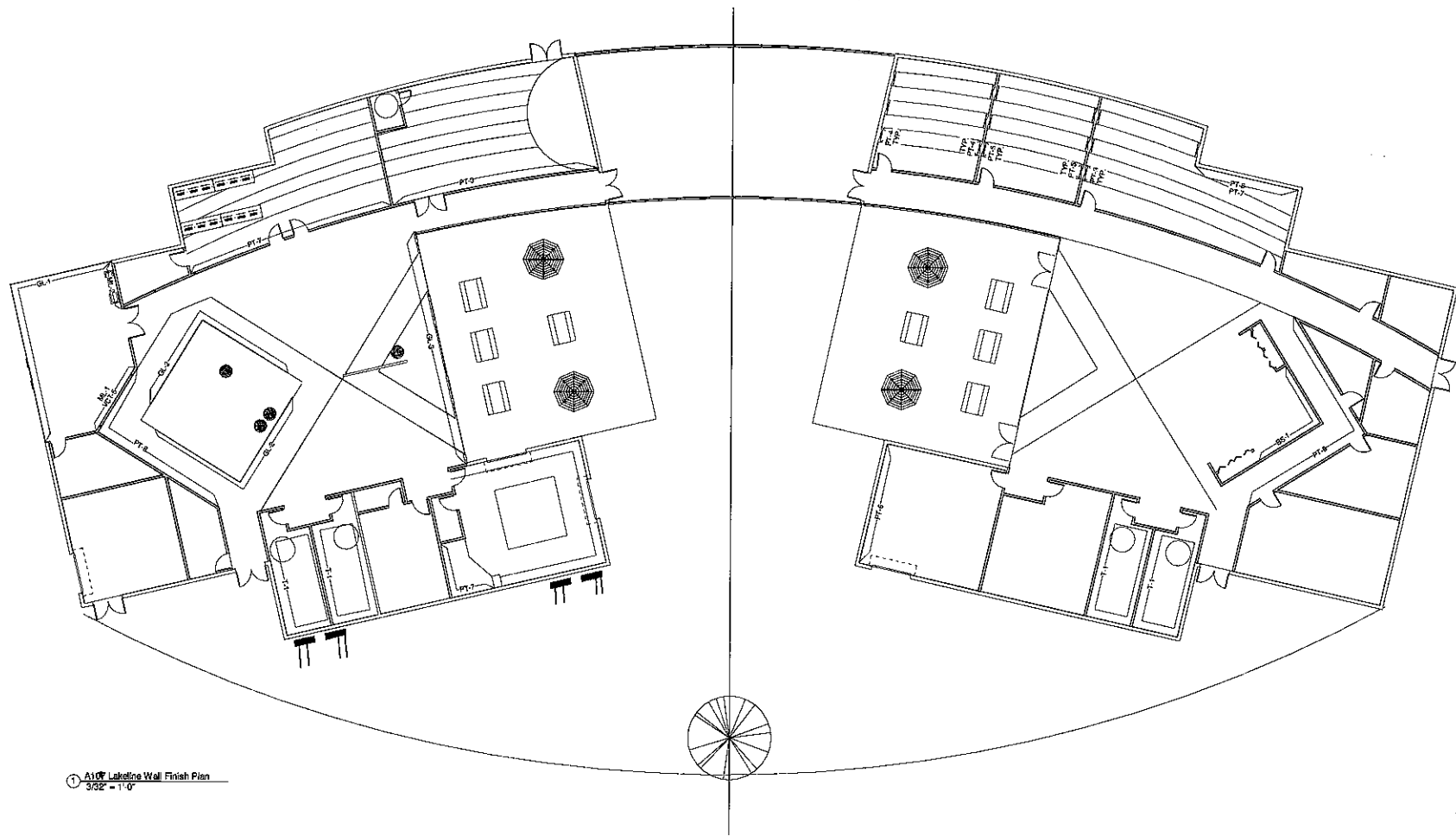
Date: December 2, 2014

Drawn By: OAK & LAS

Checked By: Brudno

A-109

Scale: 3/32" = 1'-0"



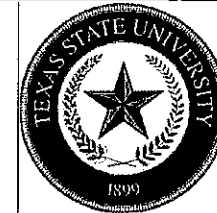
① A-109 Lakeline Wall Finish Plan
3/32" = 1'-0"

General Notes:

1. PFI is default wall finish if not specified
2. PFI is default paperboard ceiling finish if not specified
3. Strips of 3/8" x 1/4" shaped metal to be placed at every outer corner where two different wall materials intersect
4. Typical niche materials and locations
5. See A-110 for elevations and sections for wall patterns
6. PFI is default for wood baseboards if not specified
7. M, in places of A/P, and regularly spaced out on wall
8. Refer to Finish Specifications for more information

Symbol Key:

- PT: Paint
- CL: Glass
- TR: Tile Backsplash
- ML: 3/8" Metal Lumbering
- VCT: Vinyl Composition Tile



TEXAS STATE UNIVERSITY
DEPARTMENT OF INTERIOR DESIGN

LAKELINE COMMUNITY CENTER

Austin, Texas

Drawn by:
Colette King & Lacey Stewart

**NOT FOR
CONSTRUCTION**

- A-101 Cover/Site Plan
- A-102 Egress/Code Plan
- A-103 Dimensioned Floor Plan
- A-104 Furniture Plan
- A-105 Reflected Ceiling Plan
- A-106 Power/Signal Plan
- A-107 Lighting Plan
- A-108 Floor Finish Plan
- A-109 Wall Finish Plan
- A-110 Section Detail**
- A-111 Custom Detail
- A-112 Wall Detail

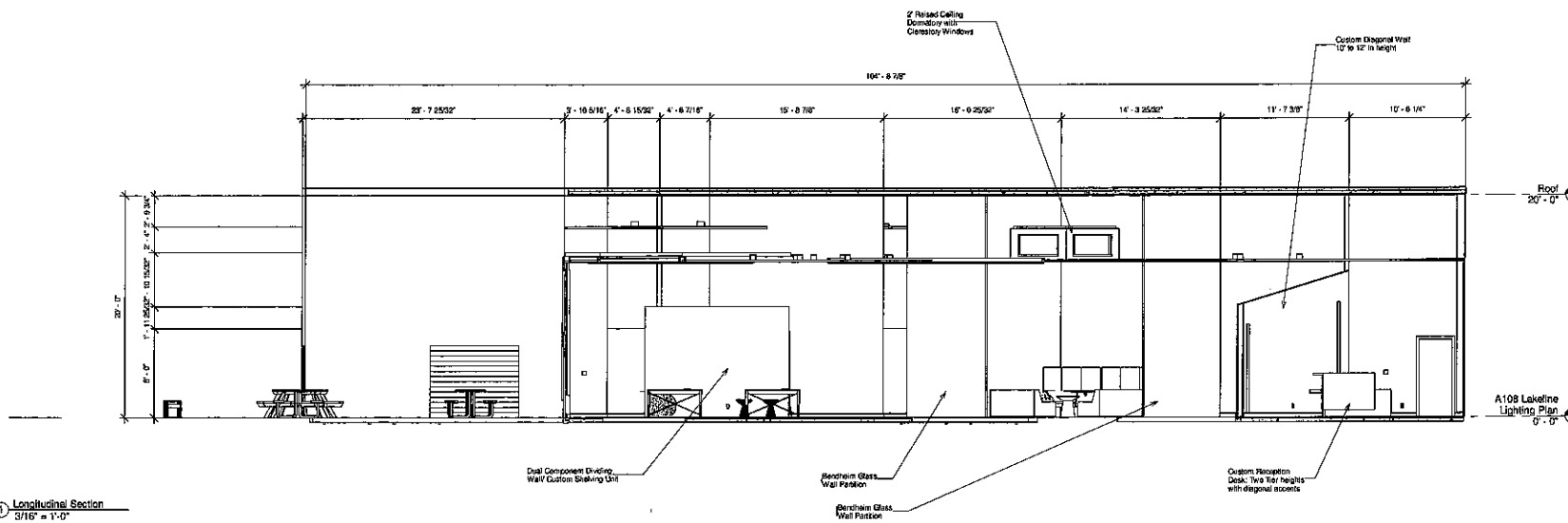
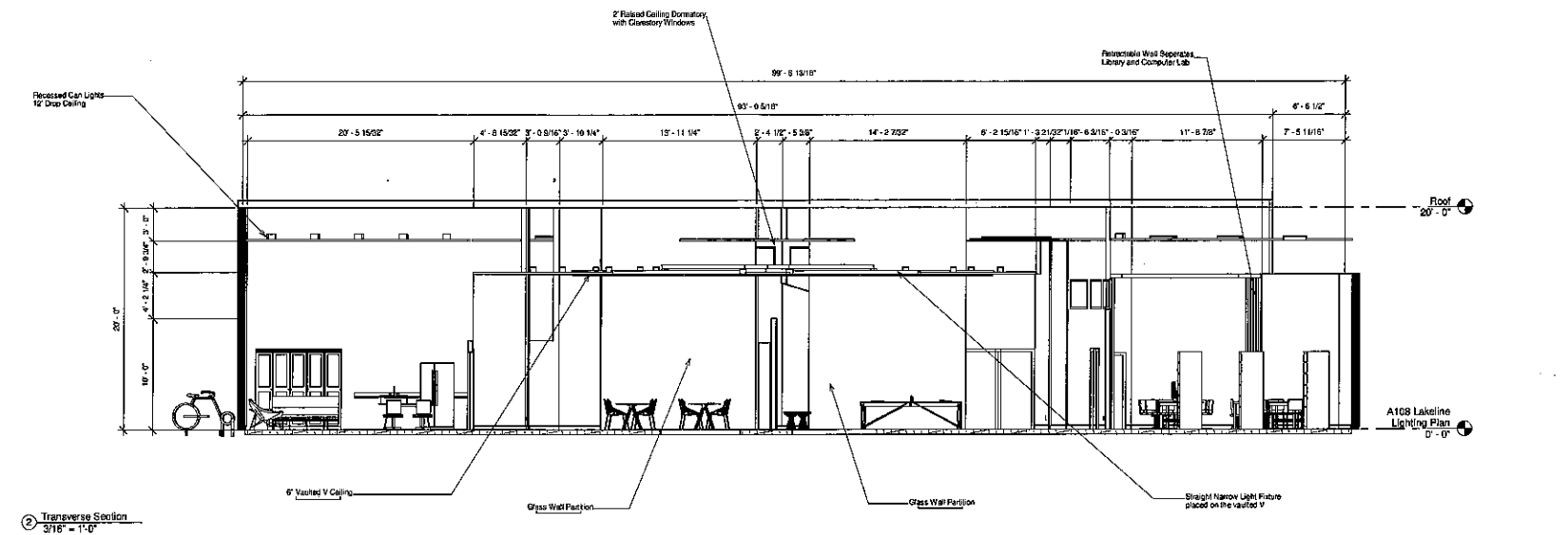
Date: December 2, 2014

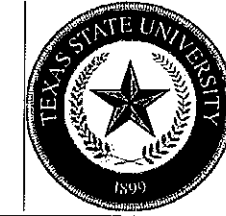
Drawn By: CAK & LAS

Checked By: Brudno

A-110

Scale: 3/16" = 1'-0"





TEXAS STATE UNIVERSITY
DEPARTMENT OF INTERIOR DESIGN

LAKELINE LEARNING CENTER

Austin, Texas

Drawn by:
Colette King & Lacey Stewart

**NOT FOR
CONSTRUCTION**

- A-101 Cover/Site Plan
- A-102 Code/Egress Plan
- A-103 Dimensioned Floor Plan
- A-104 Furniture Plan
- A-105 Reflected Ceiling Plan
- A-106 Power/Signal Plan
- A-107 Lighting Plan
- A-108 Floor Finish Plan
- A-109 Wall Finish Plan
- A-110 Section Detail
- A-111 Custom Detail**
- A-112 Wall Detail

Date: December 2, 2014

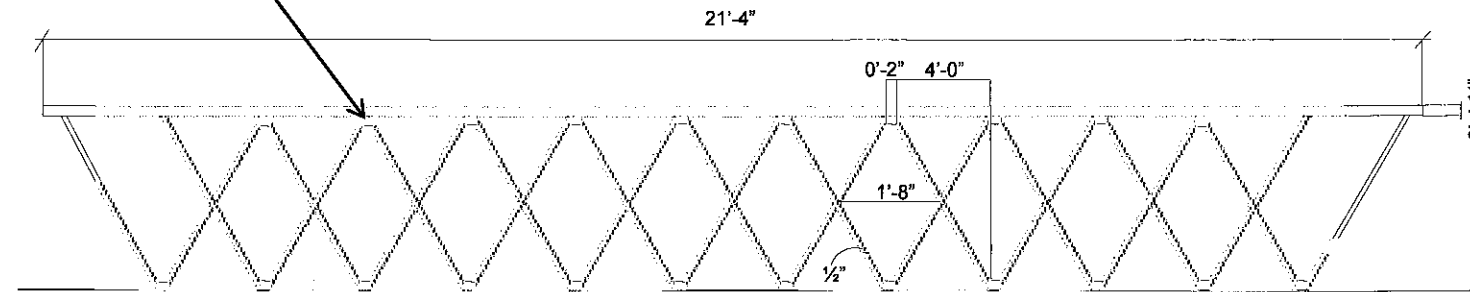
Drawn By: CAK & LAS

Checked By: Brudno

A-111

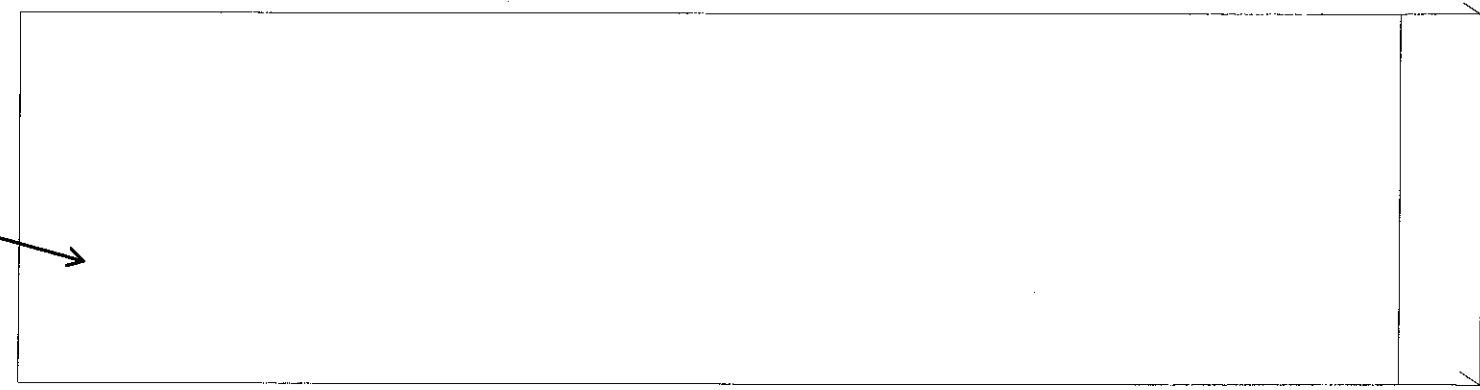
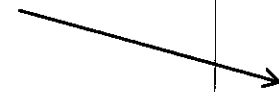
Scale: 1" = 1'-0"

Metal bent and glued
to countertop



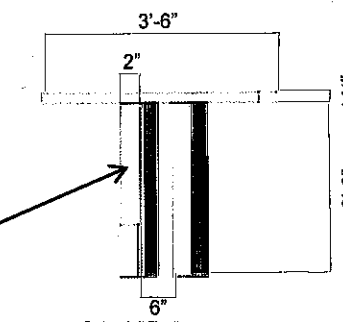
① Custom: Front Elevation
1" = 1'-0"

Stainless Steel Counter Surface

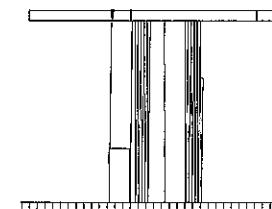


② Custom: Top Plan
1" = 1'-0"

Steel legs



③ Custom: Left Elevation
1" = 1'-0"



④ Custom: Right Elevation
1" = 1'-0"



TEXAS STATE UNIVERSITY
DEPARTMENT OF INTERIOR DESIGN

LAKELINE COMMUNITY CENTER

Austin, Texas

Drawn by:
Colette King & Lacey Stewart

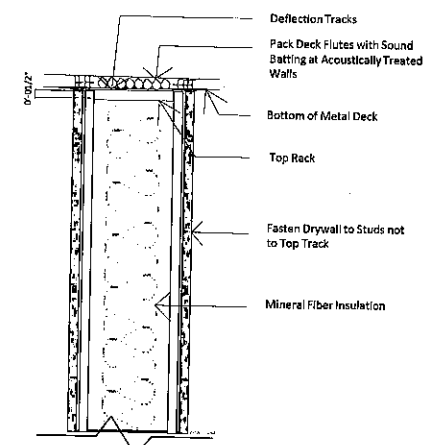
**NOT FOR
CONSTRUCTION**

- A-101 Cover/Site Plan
- A-102 Egress/Code Plan
- A-103 Dimensioned Floor Plan
- A-104 Furniture Plan
- A-105 Reflected Ceiling Plan
- A-106 Power/Signal Plan
- A-107 Lighting Plan
- A-108 Floor Finish Plan
- A-109 Wall Finish Plan
- A-110 Section Detail
- A-111 Custom Detail
- A-112 Wall Detail**

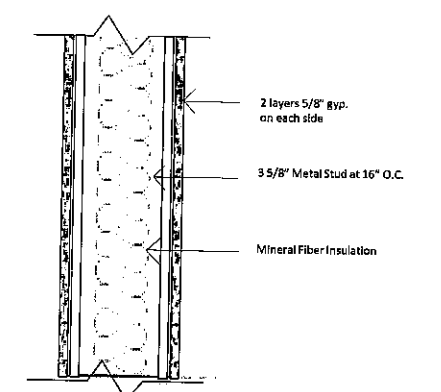
Date: December 2, 2014
 Drawn By: CAK & LAS
 Checked By: Brudno

A-112

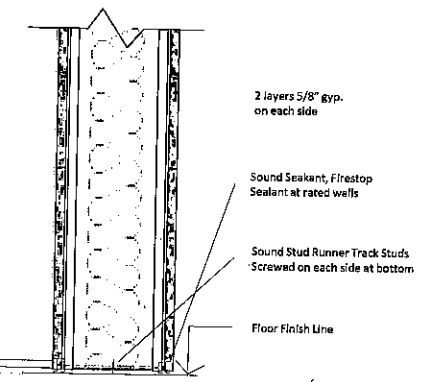
Scale: 3" = 1'-0"



3 Wall-Head Detail 2 HR.
3" = 1'-0"

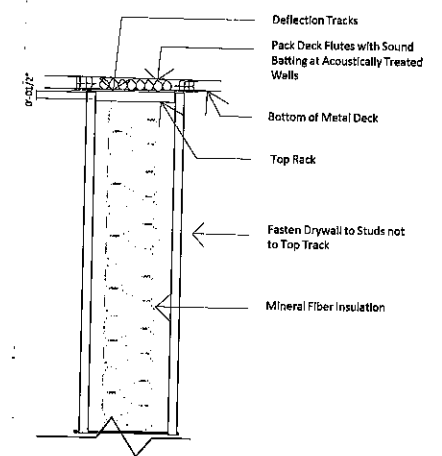


2 Wall-Plan Detail 2 HR.
3" = 1'-0"

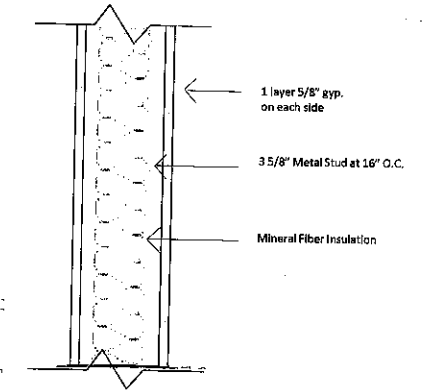


1 Wall-Base Detail 2 HR.
3" = 1'-0"

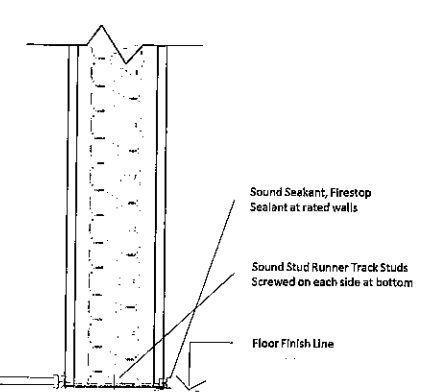
2 Hour Fire Rated Wall:
 Sound Transmission Class: 47
 Surface Weight: 11.4 PSF
 Overall Thickness: 6 1/8"
 Fire-Resistive Rating (HR): 2
 To be used within path of egress. The double layers of gypsum wall board on each side of insulation provides adequate acoustic barrier.



4 Wall-Head Detail 1 HR.
3" = 1'-0"

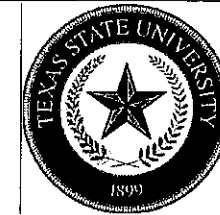


5 Wall-Plan Detail 1 HR.
3" = 1'-0"



6 Wall-Base Detail 1 HR.
3" = 1'-0"

1 Hour Fire Rated Wall:
 Sound Transmission Class: 41
 Surface Weight: 6 PSF
 Overall Thickness: 4 7/8"
 Fire-Resistive Rating (HR): 1
 To be used between different occupancies. A single layer of gypsum wall board on each side of insulation provides adequate acoustic barrier between the various occupancies.



TEXAS STATE UNIVERSITY
DEPARTMENT OF INTERIOR DESIGN

LAKELINE LEARNING CENTER

Austin, Texas

Project Name, Location

Ancillary Furniture Specifications

Floor Finish Specifications
Project: Lakeline Station Learning Center

Key: CPT-Carpet Tile
SC-Stained Concrete
VCT-Vinyl Composition Tile

RB-Rubber Base
WB-Wood Base

Mark	Description	Manufacturer	Style/Pattern	Color	Installation	Notes
CPT-1	Carpet Tile	Shaw Hard Surface	Reim Tile 5T078	Dwell	Monolithic	
SC-1	Stained Concrete	kda Custom Floor	Tortoise shell black with gray marbling	Charcoal Gray		
VCT-1	Vinyl Composition Tile	Armstrong	BBT Biostride T3505	Powder Gray	Monolithic	
VCT-2	Vinyl Composition Tile	Armstrong	BBT Biostride T3527	Green Grass	Monolithic	
VCT-3	Vinyl Composition Tile	Armstrong	BBT Biostride T3522	Lemon Squeeze	Monolithic	
VCT-4	Vinyl Composition Tile	Armstrong	BBT Biostride T3523	Orange Peel	Monolithic	
VCT-5	Vinyl Composition Tile	Armstrong	Excelon Imperial Texture 51911	Classic White		
SV-1	Sheet Vinyl	Shaw Hard Surface	Rexcourt 6.5	Grand Maple	Chemical seam seal	
SV-2	Sheet Vinyl	Shaw Hard Surface	Rexcourt 6.5	Orange	Chemical seam seal	
RB-1	Rubber Baseboard	Armstrong	BBT Biostride T35051	Ivory		
WB-1	Wood Baseboard	Elanel Wood	338MUL Maple	White River		

Drawn by:
Colette King & Lacey Stewart

NOT FOR CONSTRUCTION

- A-101 Cover/Site Plan
- A-102 Code/Egress Plan
- A-103 Dimensioned Floor Plan
- A-104 Furniture Plan
- A-105 Reflected Ceiling Plan
- A-106 Power/Signal Plan
- A-107 Lighting Plan
- A-108 Floor Finish Plan
- A-109 Wall Finish Plan
- A-110 Section Detail
- A-111 Custom Detail
- A-112 Wall Detail

Date: December 2, 2014
Drawn By: CAK & LAS
Checked By: Brudno

A-113

Scale



TEXAS STATE UNIVERSITY
DEPARTMENT OF INTERIOR DESIGN

LAKELINE LEARNING CENTER

Austin, Texas

Drawn by:
Colette King & Lacey Stewart

**NOT FOR
CONSTRUCTION**

- A-101 Cover/Site Plan
- A-102 Code/Egress Plan
- A-103 Dimensioned Floor Plan
- A-104 Furniture Plan
- A-105 Reflected Ceiling Plan
- A-106 Power/Signal Plan
- A-107 Lighting Plan
- A-108 Floor Finish Plan
- A-109 Wall Finish Plan
- A-110 Section Detail
- A-111 Custom Detail
- A-112 Wall Detail

Date: December 2, 2014
 Drawn By: CAK & LAS
 Checked By: Brudno

A-114

Scale

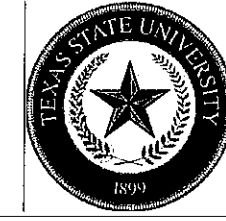
Project Name, Location

Ancillary Furniture Specifications

Wall Finish Specifications
Project: Lakeline Station Learning Center

Key: GL-Glass ACT-Acoustical Ceiling Panels
 PT-Paint Color BS-Backsplash
 VCT-Vinyl Composition Tile CT-Countertop

Mark	Description	Manufacturer	Style/Pattern	Color	Installation	Notes
GL-1	Glass Curtain Wall	Kwaneer	1600 SS Curtain Wall	Transparent		
GL-2	Glass Partitions	Bendheim	NYSR-773	Buttercup		
GL-3	Glass Custom Curtain Wall	Kwaneer	1600 SS Curtain Wall	Transparent	Diagonal V Mullions	
PT-1	Paint	Shermin Williams	SW 7656	Rhinestone		
PT-2	Paint	Shermin Williams	SW 7006	Extra White		
PT-3	Paint	Shermin Williams	SW 6718	Overt Green		
PT-4	Paint	Shermin Williams	SW 6903	Cheerful		
PT-5	Paint	Shermin Williams	SW 6892	Carnival		
PT-6	Paint	Shermin Williams	SW 6716	Dancing Green		
PT-7	Paint	Shermin Williams	Sw 6901	Daffodil		
PT-8	Paint	Shermin Williams	SW 6889	Stirring Orange		
VCT-5	Vinyl Composition Tile	Armstrong	Excelon Imperial Texture 51911	Classic White		
ACT-1	Acoustical Ceiling Cloud	Armstrong	SoundScapes Shapes 5443	Tangerine		
ACT-2	Acoustical Ceiling Cloud	Armstrong	SoundScapes Shapes 5443	Lemon		
BS-1	Glass Backsplash	Bendheim	NYSR-691	Avacado		
CT-1	Countertop	Rigidzed Metals	Satin Brushed	Stainless Steel		Island Counter
CT-2	Countertop	Cosentino Shop	Quartz	White Diamond		Kitchen Counter
CT-3	Countertop	Armstrong	Excelon Feature56830	Chalk II		Reception Desk



TEXAS STATE UNIVERSITY
DEPARTMENT OF INTERIOR DESIGN

LAKELINE LEARNING CENTER

Austin, Texas

Drawn by:
Colette King & Lacey Stewart

**NOT FOR
CONSTRUCTION**

- A-101 Cover/Site Plan
- A-102 Code/Egress Plan
- A-103 Dimensioned Floor Plan
- A-104 Furniture Plan
- A-105 Reflected Ceiling Plan
- A-106 Power/Signal Plan
- A-107 Lighting Plan
- A-108 Floor Finish Plan
- A-109 Wall Finish Plan
- A-110 Section Detail
- A-111 Custom Detail
- A-112 Wall Detail

Date: December 2, 2014
Drawn By: CAK & LAS
Checked By: Brudno

A-115

Scale

Project Name, Location

Ancillary Furniture Specifications

Lighting Specifications
Project: Lakeline Station Learning Center

Image	Code	Quantity	Description	Manufacturer	Style/Item	Finish	Notes
	R-1	111	Recessed Can Downlight: Round 6" diameter, Incandescent 42 Watts 120V	Philips	6" Performance Reflector Trim Downlight	Specular Clear	Mounted at various heights based on the ceiling heights in various areas
	R-2	113	Recessed Can Downlight: Round 6" diameter, Incandescent 42 Watts 120V	Philips	6" Performance Reflector Trim Downlight	Specular Clear	Mounted at various heights based on the ceiling heights in various areas
	SN-1	2	Recessed 30 Watt 3 3/16" width, 4 3/8" depth 12" length	Cooper Industries	Cooper NeoRay Straight & Narrow 23XR	Aluminum	Placed vertical on wall
	SN-2	6	Recessed 30 Watt 3 3/16" width, 4 3/8" depth, 27" length	Cooper Industries	Cooper NeoRay Straight & Narrow 23XR	Aluminum	Placed horizontal on ceiling
	SN-3	18	Recessed 30 Watt 3 3/16" width, 4 3/8" depth, 21" length total, 7" horizontal and 14" vertical	Cooper Industries	Cooper NeoRay Straight & Narrow 23XR	Aluminum	Placed horizontal and vertical up wall and ceiling
	PE-1	2	Suspended 27W, 4" length, 2 3/8" width, 4" depth, 9.29 W	Cooper Industries	Cooper NeoRay Led 22DF	Aluminum	Office Light
	PE-2		Suspended 4" circular luminaire, 120/277V	Cooper Industries	Cooper 461-A Series	Aluminum base, frosted glass	
	T-1	64	Trough Light T12 120 V Fluorescent 32 Watts	Philips	F3228 TGB	Aluminum	
	T-2	13	Trough Light T12 120 V Fluorescent 32 Watts	Philips	F3228 TGB	Aluminum	Restrooms
	TR-1	1	Track Lighting, LED 120V, Narrow Flood 25 degrees, aiming angle 30 degrees	Cooper Industries	Halo 806 High Output track lighting	Matte Black	Mounted on soffit above Foundation Communities wall in reception, facing the wall, lighting the words
	C-1	8	48" linear uplight strip for cove lighting, LED, 40.5 Watts	Philips	Fluxstream 4129	Aluminum	
	A-1	4	48" diameter circular acoustical panel, fiberglass & glass reinforced	Armstrong	SoundScape Shapes 5443	Tangerine	
	A-2	4	48" diameter circular acoustical panel, fiberglass & glass reinforced	Armstrong	SoundScape Shapes 5443	Lemon	



TEXAS STATE UNIVERSITY
DEPARTMENT OF INTERIOR DESIGN

LAKELINE LEARNING CENTER

Austin, Texas

Drawn by:
Colette King & Lacey Stewart

**NOT FOR
CONSTRUCTION**

- A-101 Cover/Site Plan
- A-102 Code/Egress Plan
- A-103 Dimensioned Floor Plan
- A-104 Furniture Plan
- A-105 Reflected Ceiling Plan
- A-106 Power/Signal Plan
- A-107 Lighting Plan
- A-108 Floor Finish Plan
- A-109 Wall Finish Plan
- A-110 Section Detail
- A-111 Custom Detail
- A-112 Wall Detail

Date December 2, 2014

Drawn By CAK & LAS

Checked By Grudoo

A-116

Scale

Project Name, Location

Ancillary Furniture Specifications

Furniture Specifications
Project: Lakeline Center Learning Center

Image	Key:	Code	Quantity	Description	Manufacturer	Style/Pattern	Fabric/Color	Notes
	BC-Bookshelf CH-Chair D-Desk	A	1	Custom Reception Desk ADA accessible by side approach. 2'-10" top height and 6' length		Glass bar top, calrare marble counter with painted white metal base.		Reception
	S-Sofa T-Table R-Recliner	CH-1	16	Multi-Use/Guest Chair Dimensions: 31.5"H x 20"W x 22"D	Herman Miller	Chair_One	Seat Back & Legs: YHB Black	Common Space
		CH-2		Multi-Use/Guest Chair Dimensions: 33"H x 40"W x 34"D	Herman Miller	Nelson Coconut Chair	Yellow- Green- Orange-	Classrooms
		CH-3	2	Task Chair Dimensions: OAH 42" x OAHW 29"	Herman Miller	CN122AWAARFG1G1G 1	Frame: Graphite Base: Graphite	Offices
		CH-4	1	40"W x 33"H x 34"D	Herman Miller	Nelson Coconut Chair	Seat & Back: Black Leather Base: Chrome	Break Room
		CH-5	11	22.04"W x 33.07"H x 18.7"D	Herman Miller	Steel_One	Finish YHB Black	Break Room + Kitchen
		D-1	2	Desk Dimensions: 60"W x 28"D x 29"H	Herman Miller	Eames Desk & File Drawer #DU20.ZCNC	Top: Triefrog Veneer Pattern: Teak Straight Grain: 60804 Base: Graphite Glens 4138	Offices Right side
		R-1	3	31.58"W x 31.14"D x 46.516"H 21" seat height	Steelcase	Nurture Empath Recliner	Cushion: 5903 Calary Table & Arm: 6259 Midnight	Waiting
		S-1	2	Sofa Dimensions: 32"D x 60"W x 29"H, seat height: 18"	Steelcase	Campfire Big Lounge T03BC	beck: front:	"Quiet" area
		S-2	1	26" x 26"	Herman Miller	Public Office Landscape	Seat Fabric & Network: 8115 Twist Stone Leg Finish: 91 White Glide: Durawrap 91 White Back: Laminate 91 White	Reception
		S-3	2	60"W x 30"D x 33"H 15.5" seat height	Herman Miller	Eames Sofa	Black Leather with teak wood finish, 3 seat design	Break Room
		T-1	22	Table Dimensions: 33"D x 120"W x 28"H	Herman Miller	Baguette Table	Top: White YCF Base: YCB Black	Classrooms + Common Space
		T-2		Multi-Use Paper Table Dimensions: 24.5"W x 24.5"D x 22.5"H	Steelcase	Campfire Paper Table by Turnstone	Base: 2530 Warm Oak	Quiet Space + Break Room
		T-3		Split Table Top Dimensions: 98"W x 48"D x 40"H	Steelcase	Campfire Big Table by Turnstone	Pop-up Power	STREAM
		T-4	4	Personal Table Dimensions: 18.5"D x 14"W x 26"H	Steelcase	Campfire Personal Table by Turnstone	Oak Veneer	Quiet Space + Break Room