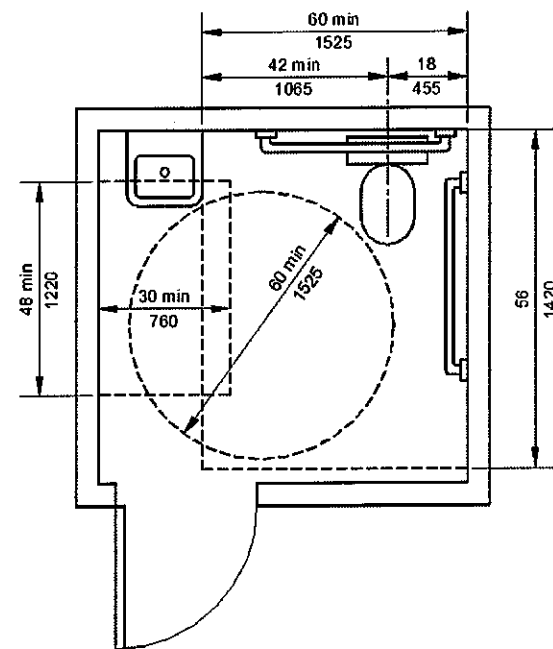
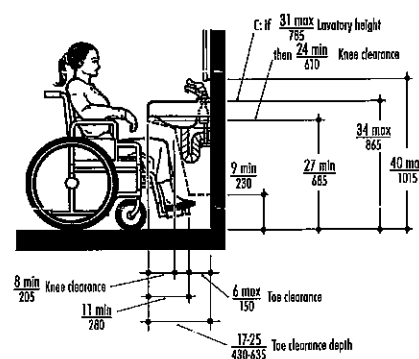


# SUNRAYS SENIOR LIVING COMMUNITY

## CONSTRUCTION DOCUMENTS



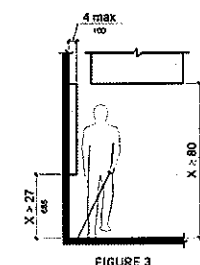
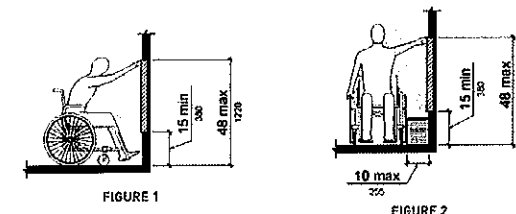
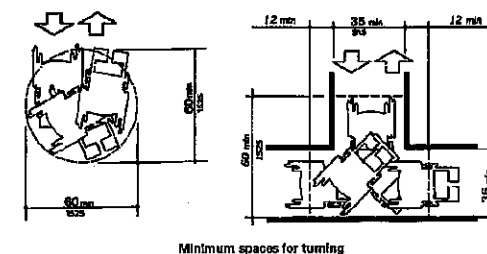
### BUILDING CODE ANALYSIS:

BUILDING CODE:	INTERNATIONAL BUILDING CODE, 2006 EDITION TEXAS DADS
<b>SENIOR LIVING COMMUNITY</b>	
BUILDING OCCUPANCY:	INSTITUTIONAL GROUP I-2, MEMORY CARE FACILITY RESIDENTIAL GROUP R-2, INDEPENDENT FACILITY BUSINESS GROUP B & ASSEMBLY A-2, COMMONS NONCOMBUSTIBLE, TYPE I B
CONSTRUCTION TYPE:	
TABULAR AREA:	55,000 SF PER FLOOR, TABLE 503
ALLOWABLE BUILDING AREA:	220,000 SF PER FLOOR, SECTION 506.3
ACTUAL BUILDING AREA:	
TABULAR AREA:	9 STORIES, 160 FEET, TABLE 503
ALLOWABLE HEIGHT:	10 STORIES, 160 FEET, SECTION 504.2
ACTUAL HEIGHT:	
*THE AREA IS EQUIPPED THROUGHOUT WITH AN AUTOMATIC SPRINKLER SYSTEM IN ACCORDANCE WITH SECTION 909.2.1.1 AND IS SURROUNDED AND ADJOINED BY PUBLIC WAYS OR YARDS NOT LESS THAN 60 FEET IN WIDTH.*	
<b>MAXIMUM FLOOR AREA ALLOWANCE PER OCCUPANT:</b>	
ACCESSORY STORAGE AREAS.....	1 PER 300 GROSS S.F.
MECHANICAL EQUIPMENT ROOM.....	1 PER 300 GROSS S.F.
EXERCISE ROOMS.....	1 PER 50 GROSS S.F.
LIBRARY READING ROOMS.....	1 PER 50 NET S.F.
ASSEMBLY WITHOUT FIRED SEATS.....	1 PER 15 NET S.F.
CONCENTRATED TABLES & CHAIRS.....	
BUSINESS AREAS.....	1 PER 100 GROSS S.F.
KITCHENS COMMERCIAL.....	1 PER 200 GROSS S.F.
RESIDENTIAL.....	1 PER 200 GROSS S.F.
<b>PROJECT OCCUPANT LOADS:</b>	
INSTITUTIONAL OCCUPANCY LOADS:	20 OCCUPANTS
RESIDENTIAL OCCUPANCY LOADS:	75 OCCUPANTS

<b>EGRESS WIDTH PER OCCUPANT SERVED:</b>	
FIRST BUILDING:	
OTHER EGRESS COMPONENTS:	45 INCHES
0.15 INCHES PER OCCUPANT	
<b>EGRESS WIDTH PROVIDED:</b>	
FIRST FLOOR:	
OTHER EGRESS COMPONENTS:	96 INCHES
0.15 INCHES PER OCCUPANT	
<b>ALLOWABLE COMMON PATH OF EGRESS TRAVEL:</b>	
75'	
<b>ACTUAL MAXIMUM COMMON PATH OF EGRESS TRAVEL:</b>	
60'	
<b>ALLOWABLE TRAVEL DISTANCE TO EXIT ACCESS:</b>	
250' WHEN BUILDING IS SPRINKLED	
<b>ACTUAL MAXIMUM TRAVEL DISTANCE TO EXIT ACCESS:</b>	
127'	
<b>MAXIMUM ALLOWED DEAD-END DISTANCE IN CORRIDORS:</b>	
50'	
<b>ACTUAL MAXIMUM DEAD-END DISTANCE IN CORRIDORS:</b>	
42'	

<b>FIRE-RESISTIVE RATING REQUIREMENTS FOR BUILDING ELEMENTS (hours)</b>	
STRUCTURAL FRAME.....	2 HR
BEARING WALLS EXTERIOR.....	2 HR
INTERIOR WALLS INTERIOR.....	2 HR
NONBEARING WALLS EXTERIOR.....	1 HR
NONBEARING WALLS & PARTITIONS INTERIOR.....	0 HR
FLOOR CONSTRUCTION INCLUDING SUPPORTING BEAMS.....	2 HR

AND JOISTS	
ROOF CONSTRUCTION INCLUDING SUPPORTING BEAMS AND JOISTS.....	1 HR
FIRE BARRIERS.....	2 HR
FIRE PARTITIONS (CORRIDOR WALLS).....	1 HR
CORRIDORS.....	1 HR, WITH SPRINKLER SYSTEM, TABLE 1017.1
FURNACE ROOMS OVER 400,000 BTUH STORAGE OVER 100 SF.....	1 HR ON SPRINKLED
BOILER ROOMS OVER 15 PSI & 10 HP REFRIGERANT MACHINERY ROOMS.....	1 HR ON SPRINKLED
<b>INTERIOR FINISHES FLAME SPREAD REQUIREMENTS:</b>	
ENT ENCLOSURES AND EXIT.....	CLASS B
PASSAGEWAYS, SPRINKLERED BUILDING CORRIDORS, SPRINKLERED BUILDING ROOMS AND ENCLOSED SPACES, SPRINKLERED BUILDING.....	CLASS C
<b>FIRE PROTECTION SYSTEMS:</b>	
AUTOMATIC SPRINKLER SYSTEM.....	AUTOMATIC SPRINKLER SYSTEM REQUIRED PER SECTION 909.2.1.1
NFPA 13 SPRINKLER SYSTEM.....	CLASS I
STANDPIPES.....	MANUAL (EXCEPTION: MANUAL FIRE ALARM BOXES ARE NOT REQUIRED WHERE THE BUILDING IS EQUIPPED THROUGHOUT WITH AN AUTOMATIC SPRINKLER SYSTEM AND THE ALARM NOTIFICATION APPLIANCES WILL ACTIVATE UPON SPRINKLER WATER FLOW)
FIRE ALARM SYSTEM.....	



NOT FOR CONSTRUCTION

TEXAS  
STATE  
UNIVERSITY

The rising STAR of Texas

DEPARTMENT OF  
INTERIOR DESIGN

STUDIO IV  
CONTEMPORARY DESIGN  
HEGDE  
SPRING 2015

NOT FOR  
CONSTRUCTION

SUNRAYS

SENIOR LIVING  
COMMUNITY

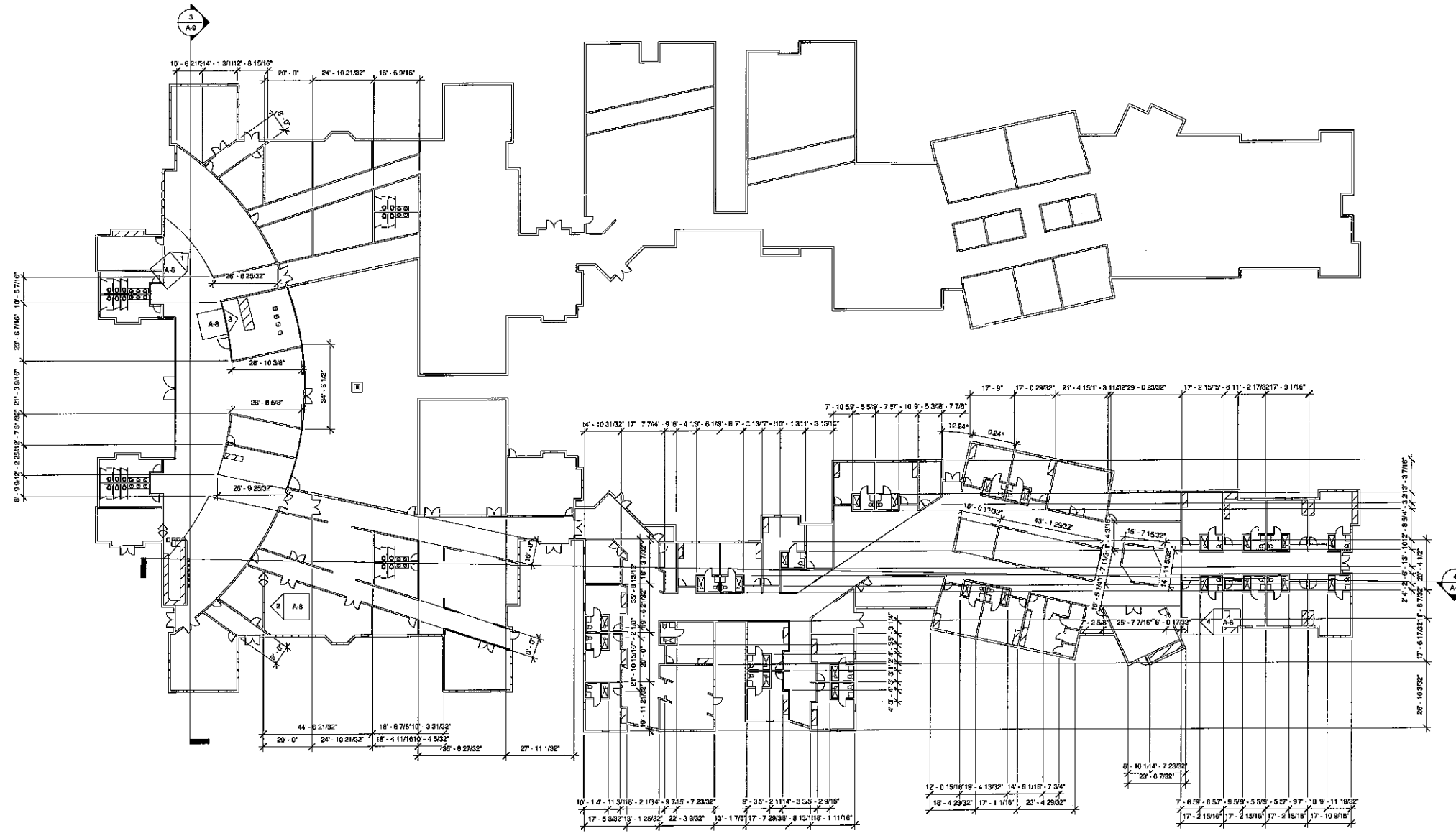
Cover Page

Project number 1  
Date 4/28/15  
Drawn by LAS  
Checked by HEGDE

A-0

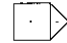

Scale 3/64" = 1'-0"

4/27/2015 10:05:08 AM



① Dimensioned Floor Plan  
3/84" = 1'-0"

**GENERAL NOTES:**  
ALL EXTERIOR WALLS = 8"  
ALL INTERIOR WALLS = 5"  
UNLESS OTHERWISE NOTED

**SYMBOL KEY:**  
 ELEVATION SYMBOL  
 SECTION SYMBOL

NOT FOR CONSTRUCTION

**TEXAS STATE UNIVERSITY**  
*The rising STAR of Texas*

DEPARTMENT OF INTERIOR DESIGN

STUDIO IV  
CONTEMPORARY DESIGN  
HEGDE  
SPRING 2015

**NOT FOR CONSTRUCTION**

SUNRAYS  
SENIOR LIVING COMMUNITY

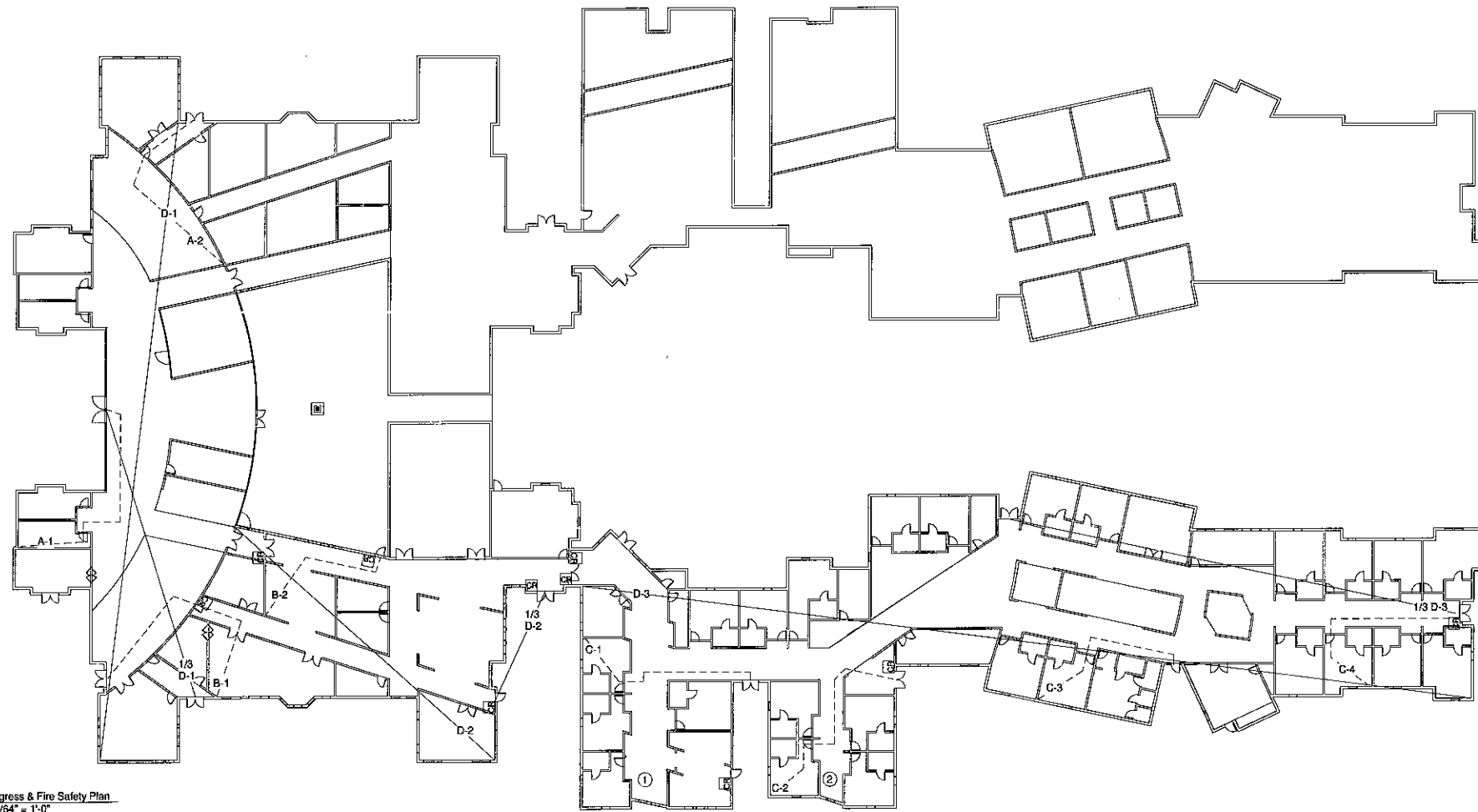
Dimensioned Floor Plan

Project number 1  
Date 4/28/15  
Drawn by LAS  
Checked by HEGDE

**A-1**

Scale 3/84" = 1'-0"

4/28/2015 11:16:39 AM



① Egress & Fire Safety Plan  
3/64" = 1'-0"

**GENERAL NOTES:**

DEAD-END CORRIDORS NEED TO BE LESS THAN 50'  
 (1" FROM DEAD END CORRIDOR TO THE CENTER LINE OF THE CORRIDOR THAT PROVIDES THE CHOICE OF TWO MEANS OF EGRESS)  
 (1) = DEAD END CORRIDOR LESS THAN 50'  
 (2) = 43'  
 (3) = 41'

**SPRINKLERED BUILDING:**  
 49 OCCUPANTS PER 100' TRAVEL DISTANCE IN BUSINESS CLASSIFICATION  
 19 OCCUPANTS PER 75' TRAVEL DISTANCE IN INSTITUTIONAL CLASSIFICATION

OCCUPANCY	TOTAL WC	SQ. FT. EACH	TOTAL SQ. FT.
A-2 (LOBBY/RESTAURANT)	2	170 SQ. FT.	340 SQ. FT.
D-1 (BUSINESS)	1	46 SQ. FT.	46 SQ. FT.

**OCCUPANCY LOAD CALCULATIONS:**

TYPE	SQ. FT.	GROSS
BUSINESS B (COMMONS)	10204	245
BUSINESS B (MG COMMONS)	7062	74
INSTITUTIONAL 1 (MEMORY CARE)	6264	30 (26 min)

**EXITS: 1/3 DIAGONAL RULE**

D-1 IS DIAGONAL DISTANCE FOR BUSINESS OCCUPANCY = 224'-8"  
 1/3 OF D-1 = 74'-11", 74'-11" IS THE MINIMUM DISTANCE BETWEEN EXIT DOORS  
 D-2 IS DIAGONAL DISTANCE FOR MC BUSINESS OCCUPANCY = 122'-8"  
 1/3 OF D-2 = 41'-2", 41'-2" IS THE MINIMUM DISTANCE BETWEEN EXIT DOORS  
 D-3 IS DIAGONAL DISTANCE FOR MEMORY CARE OCCUPANCY = 310'-1"  
 1/3 OF D-3 = 103'-1" IS THE MINIMUM DISTANCE BETWEEN EXIT DOORS

**TRAVEL DISTANCES (NEEDS TO BE LESS THAN 200')**

A-1	78'-3"
A-2	75'-2"
B-1	88'-10"
B-2	84'-3"
C-1	89'-3"
C-2	74'-2"
C-3	83'-5"
C-4	73'-2"

NOT FOR CONSTRUCTION

**TEXAS STATE UNIVERSITY**  
*The rising STAR of Texas*

DEPARTMENT OF INTERIOR DESIGN

STUDIO IV  
 CONTEMPORARY DESIGN  
 HEGDE  
 SPRING 2015

**NOT FOR CONSTRUCTION**

SUNRAYS

SENIOR LIVING COMMUNITY

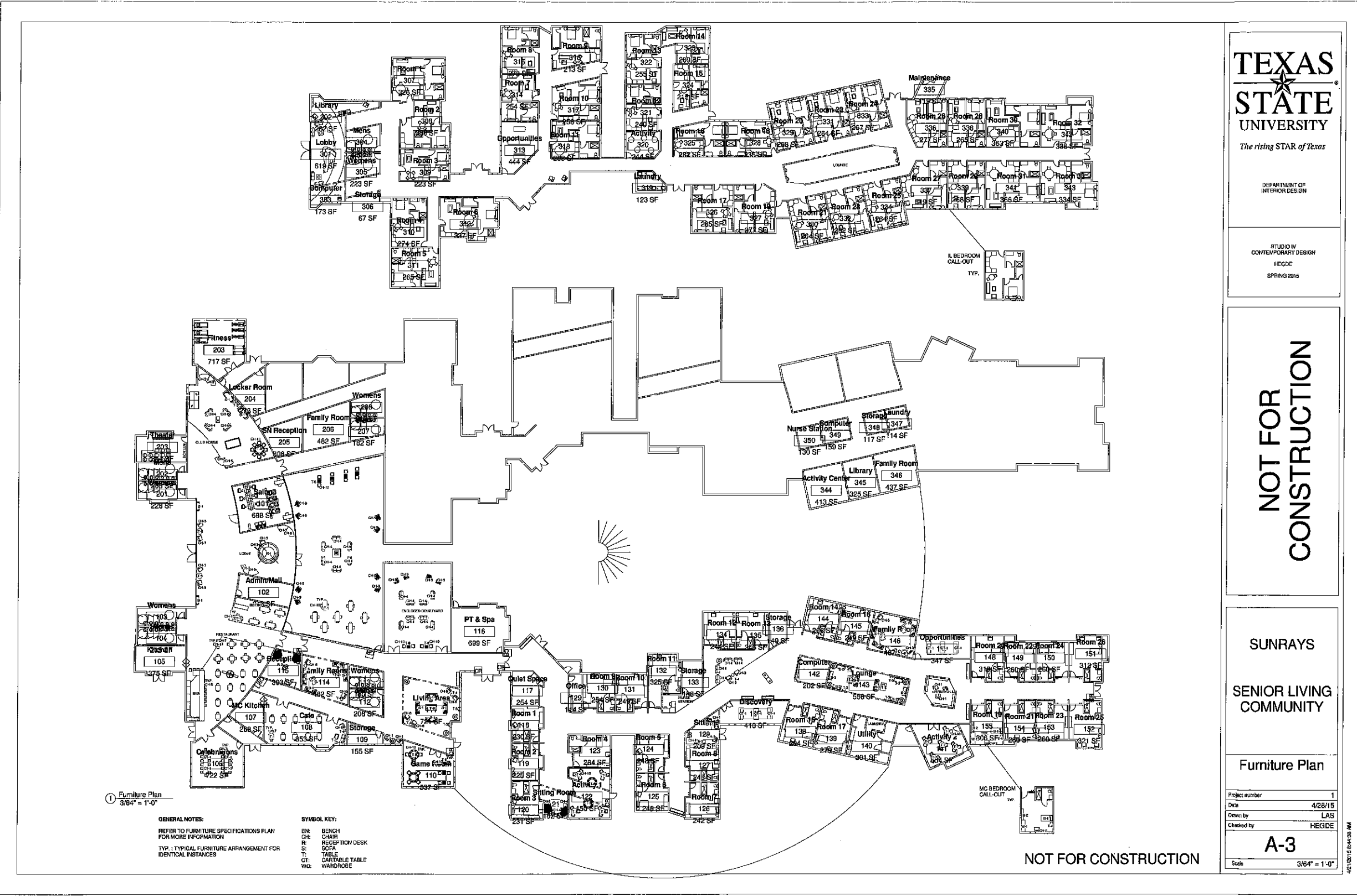
Egress & Fire Safety Plan

Project number 1  
 Date 4/28/15  
 Drawn by LAS  
 Checked by HEGDE

**A-2**

Scale 3/64" = 1'-0"

4/28/2015 7:15:00 PM



1 Furniture Plan  
3/8" = 1'-0"

**GENERAL NOTES:**  
REFER TO FURNITURE SPECIFICATIONS PLAN FOR MORE INFORMATION  
TYP. - TYPICAL FURNITURE ARRANGEMENT FOR IDENTICAL INSTANCES

**SYMBOL KEY:**  
BN: BENCH  
CH: CHAIR  
R: RECEPTION DESK  
S: SOFA  
T: TABLE  
CT: CARTABLE TABLE  
WD: WARDROBE

**TEXAS STATE UNIVERSITY**  
*The rising STAR of Texas*

DEPARTMENT OF INTERIOR DESIGN

STUDIO BY CONTEMPORARY DESIGN  
HEGDE  
SPRING 2015

**NOT FOR CONSTRUCTION**

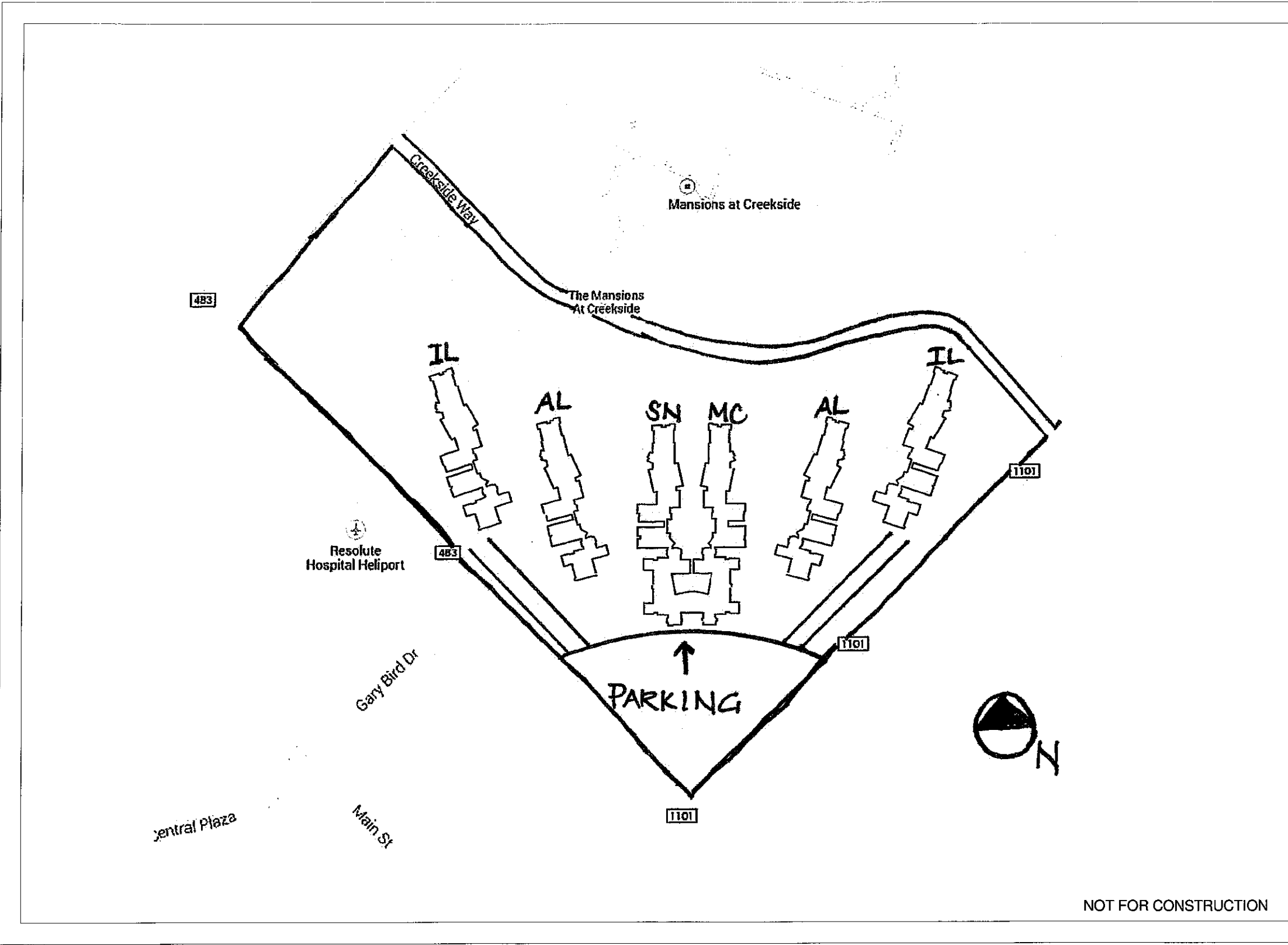
**SUNRAYS SENIOR LIVING COMMUNITY**

Furniture Plan

Project number	1
Date	4/28/15
Drawn by	LAS
Checked by	HEGDE
<b>A-3</b>	
Scale	3/8" = 1'-0"

NOT FOR CONSTRUCTION

4/21/2015 8:44:38 AM



**TEXAS STATE UNIVERSITY**  
*The rising STAR of Texas*

DEPARTMENT OF INTERIOR DESIGN

STUDIO IV  
 CONTEMPORARY DESIGN  
 HEGDE  
 SPRING 2015

**NOT FOR CONSTRUCTION**

SUNRAYS  
 SENIOR LIVING COMMUNITY

Site Plan

Project number	1
Date	4/28/15
Drawn by	LAS
Checked by	HEGDE

**A-4**

Scale 3/64" = 1'-0"

NOT FOR CONSTRUCTION

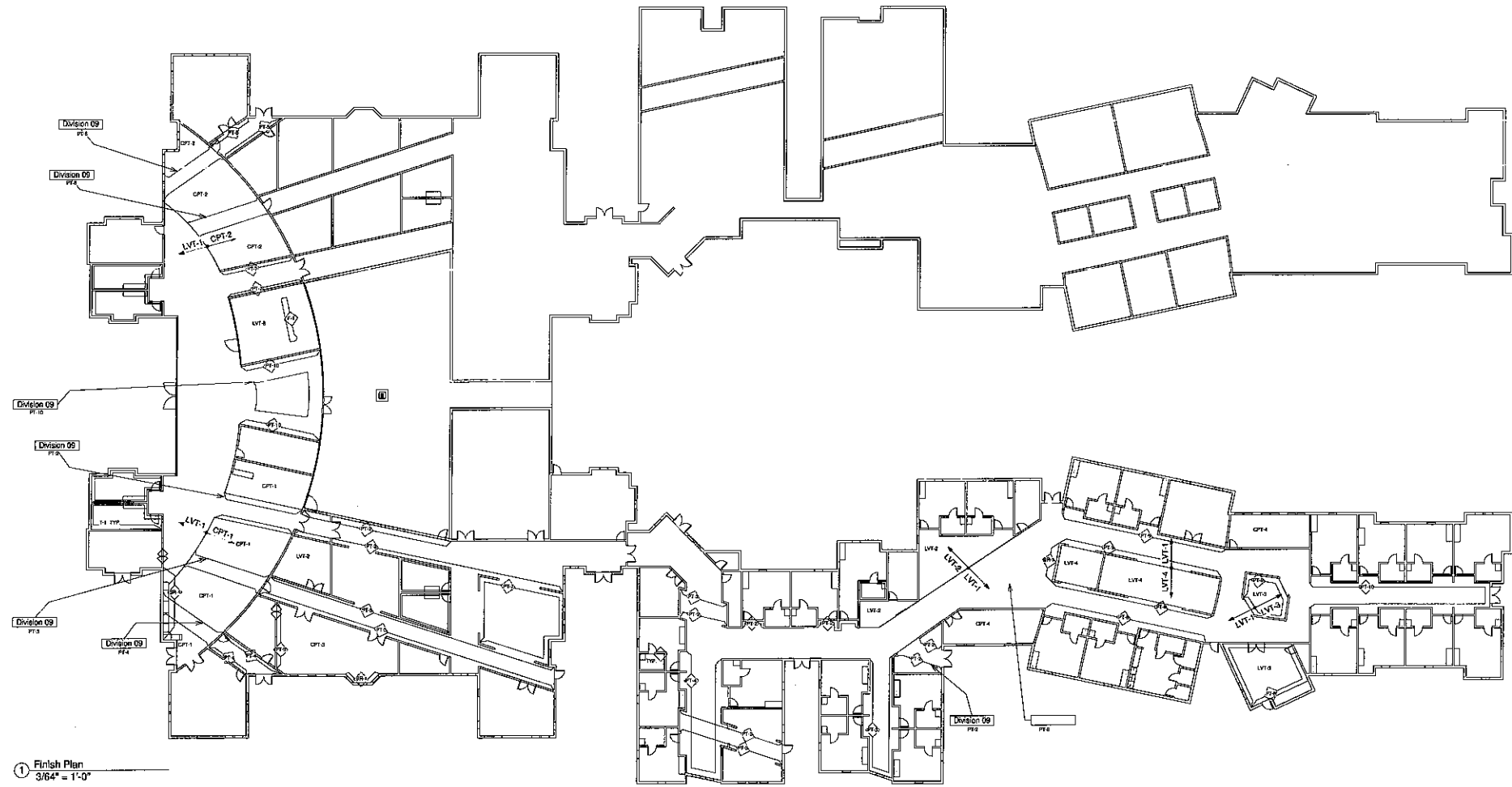
4/28/2015 10:02:28 AM

**NOT FOR CONSTRUCTION**

SUNRAYS  
SENIOR LIVING COMMUNITY

Finish Plan

Project number	1
Date	4/28/15
Drawn by	LAS
Checked by	HEGDE
<b>A-5</b>	
Scale	3/16" = 1'-0"

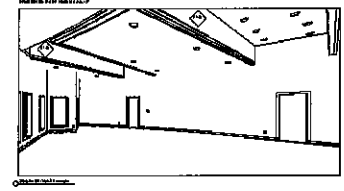


① Finish Plan  
3/16" = 1'-0"

- GENERAL NOTES:**
1. LVT-1 IS DEFAULT FLOOR FINISH IF NOT SPECIFIED
  2. RB-1 IS DEFAULT BASEBOARD UNLESS OTHERWISE NOTED
  3. PT-1 IS DEFAULT WALL FINISH IF NOT SPECIFIED
  4. PT-2 IS DEFAULT GYPSUM BOARD CEILING FINISH IF NOT SPECIFIED
  5. STANDARD 5/8" WALL L-SHAPED REVEAL TO BE PLACED AT EVERY OUTLET CORNER WHERE TWO DIFFERENT WALL MATERIALS INTERSECT
  6. TYPICAL NICHE MATERIALS AND INSTALLATION
  7. SEE A-8, A-9 FOR ELEVATIONS AND SECTIONS FOR WALL PATTERNS
  8. REFER TO FINISH SPECIFICATIONS FOR MORE INFORMATION
  9. TYP. IS TYPICAL ARRANGEMENT FOR IDENTICAL INSTANCES

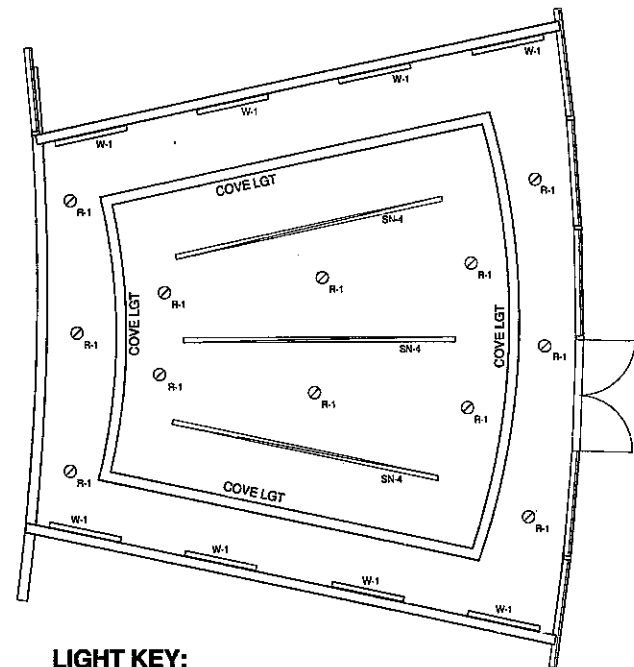
- SYMBOL KEY:**
- CPT: CARPET TILE
  - LVT: LUXURY VINYL TILE
  - RB: RUBBER BASEBOARD
  - PT: PAINT
  - BR: BRICK
  - F: WALL FIXTURE

- SYMBOL KEY:**
- ◇ WALL FINISH MATERIAL
  - TRANSITION TO DIFFERENT MATERIAL
  - A - # FLOORING FINISH MATERIAL
  - ◇ SPECIFIC WALL FINISH MATERIAL 1/2 A.F.F.



NOT FOR CONSTRUCTION





**LIGHT KEY:**

LIGHT	MANF.	WATT.	VOL.
R-1	PHILIPS	60	120
SN-4	PEERLESS	38	120
W-1	FOCAL POINT	23	120
C	TIVOLI	6.8	120

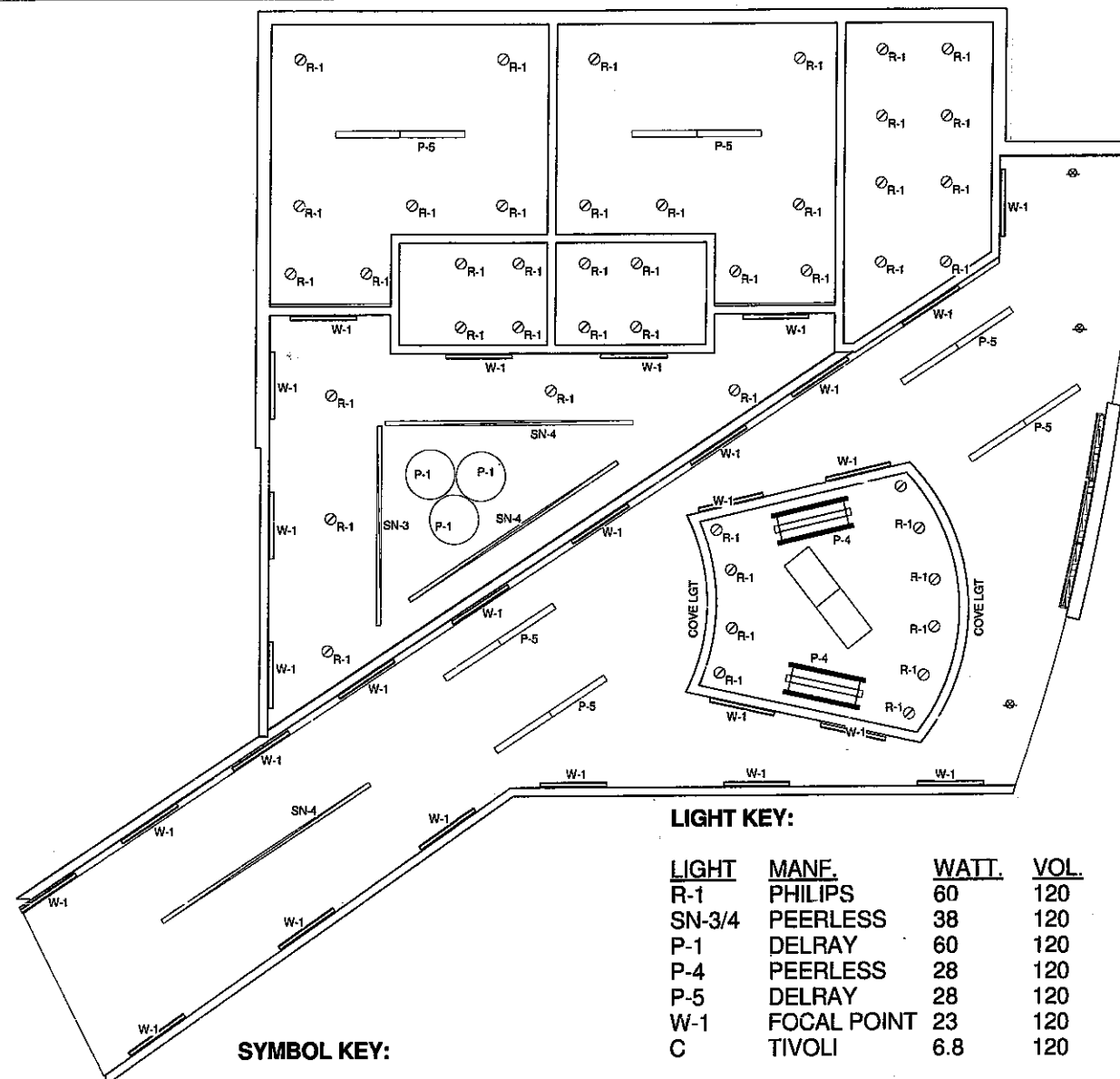
**GENERAL NOTES:**

REFER TO LIGHTING FINISH SPECIFICATIONS FOR MORE INFORMATION

TYP. IS TYPICAL ARRANGEMENT FOR IDENTICAL INSTANCES

**SYMBOL KEY:**

- CYLINDRO III
- CONTRAIL PARALLEL
- STRAIGHT & NARROW
- RECESSED CAN
- STICK T5



**LIGHT KEY:**

LIGHT	MANF.	WATT.	VOL.
R-1	PHILIPS	60	120
SN-3/4	PEERLESS	38	120
P-1	DELRAY	60	120
P-4	PEERLESS	28	120
P-5	DELRAY	28	120
W-1	FOCAL POINT	23	120
C	TIVOLI	6.8	120

**SYMBOL KEY:**

- P: PENDANT LIGHT FIXTURE
- R: RECESSED LIGHT FIXTURE
- S: STRIP LIGHT FIXTURE
- C: COVE LIGHT FIXTURE
- CEILING HEIGHT CHANGE
- GYPSUM CEILING BOARD

NOT FOR CONSTRUCTION

**TEXAS STATE UNIVERSITY**

*The rising STAR of Texas*

DEPARTMENT OF INTERIOR DESIGN

STUDIO IV  
CONTEMPORARY DESIGN  
HEGDE  
SPRING 2015

**NOT FOR CONSTRUCTION**

SUNRAYS

SENIOR LIVING COMMUNITY

Lighting Layer Plan

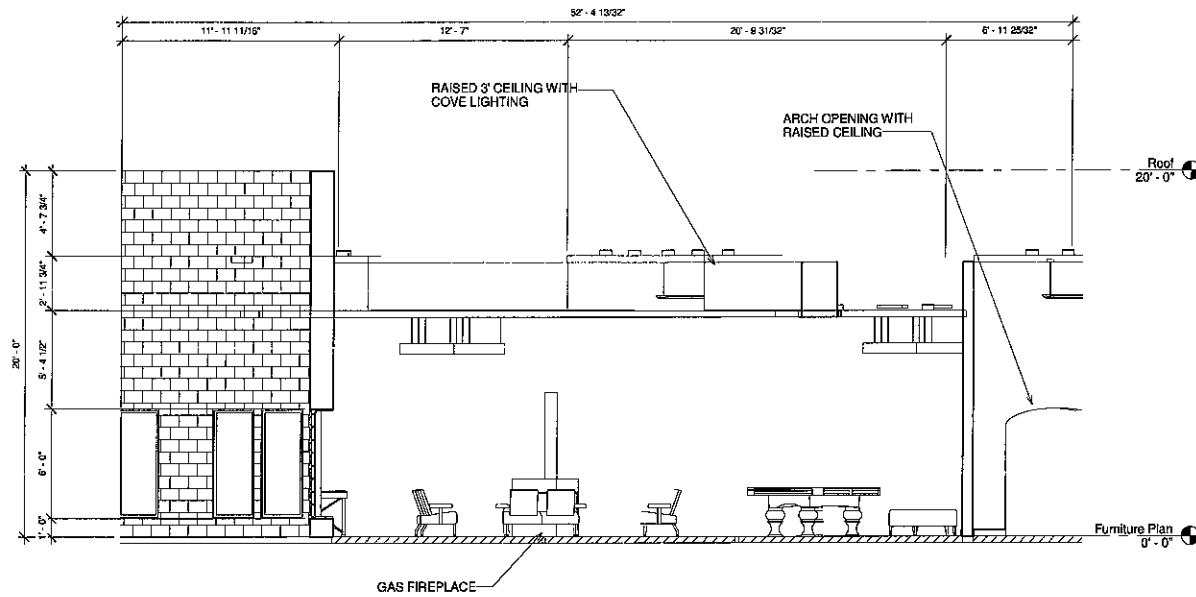
Project number 1  
Date 4/24/15  
Drawn by LAS  
Checked by HEGDE

**A7**

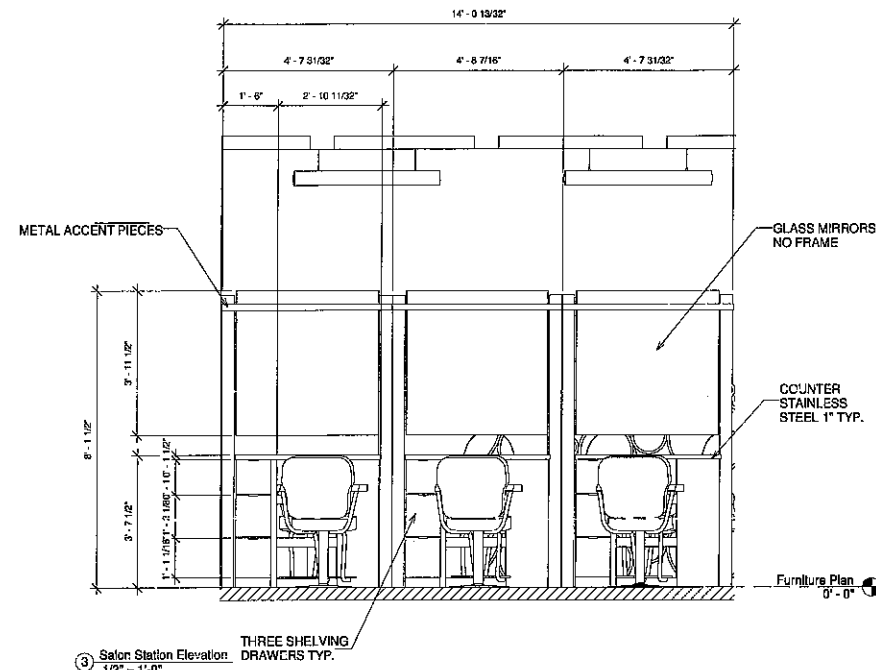
Scale 1/4" = 1'-0"

© 2015 TEXAS STATE UNIVERSITY

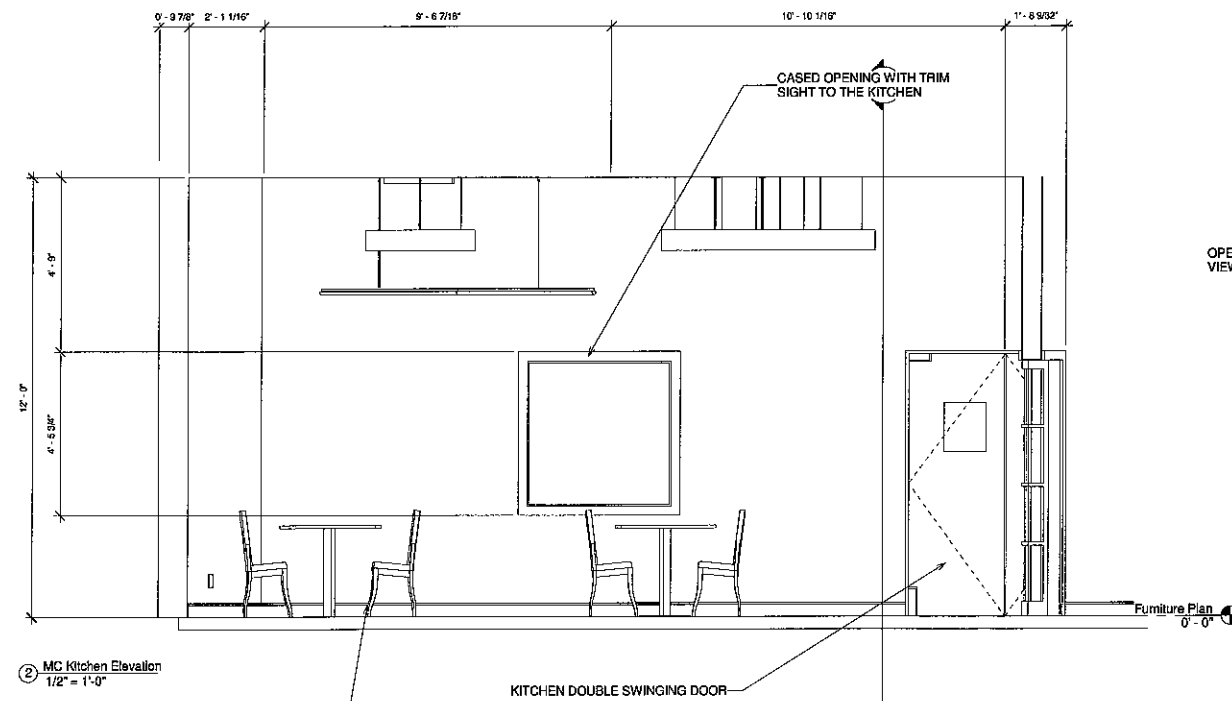




1 Club House Elevation  
1/4" = 1'-0"

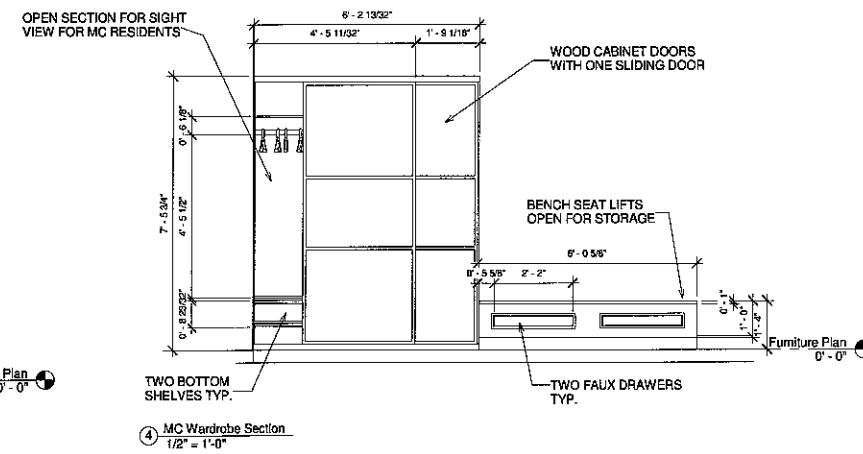


3 Salon Station Elevation  
1/2" = 1'-0"



2 MC Kitchen Elevation  
1/2" = 1'-0"

2 CHAIRS AT EACH TABLE FOR WHEELCHAIR ACCESSIBLE IN MEMORY CARE WING



4 MC Wardrobe Section  
1/2" = 1'-0"

**TEXAS STATE UNIVERSITY**

*The rising STAR of Texas*

DEPARTMENT OF INTERIOR DESIGN

STUDIO IV  
CONTEMPORARY DESIGN  
HEGDE  
SPRING 2015

**NOT FOR CONSTRUCTION**

SUNRAYS  
SENIOR LIVING COMMUNITY

Elevations

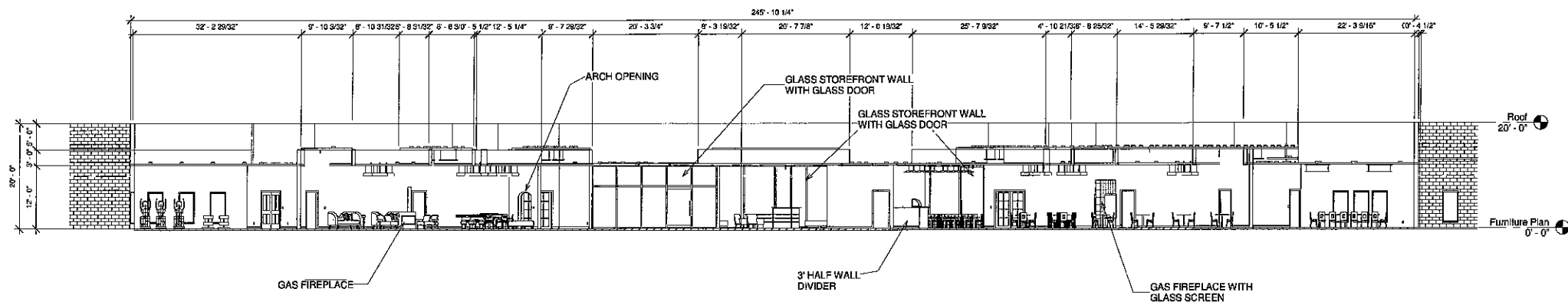
Project number 1  
Date 4/28/15  
Drawn by LAS  
Checked by HEGDE

**A-8**

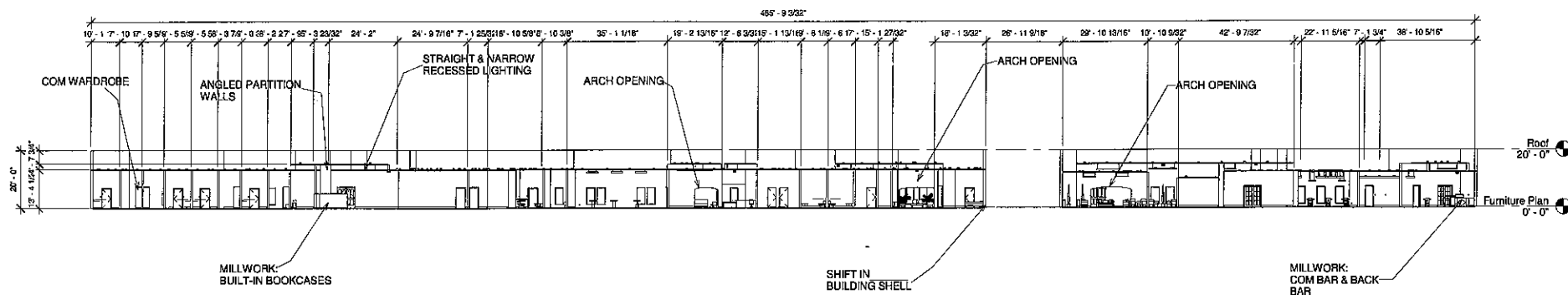
Scale As Indicated

**NOT FOR CONSTRUCTION**

4/28/2015 9:00:19 AM



① Transverse Section  
3/32" = 1'-0"



② Longitudinal Section  
3/64" = 1'-0"

**TEXAS STATE UNIVERSITY**

*The rising STAR of Texas*

DEPARTMENT OF INTERIOR DESIGN

STUDIO IV  
CONTEMPORARY DESIGN  
HEGDE  
SPRING 2015

**NOT FOR CONSTRUCTION**

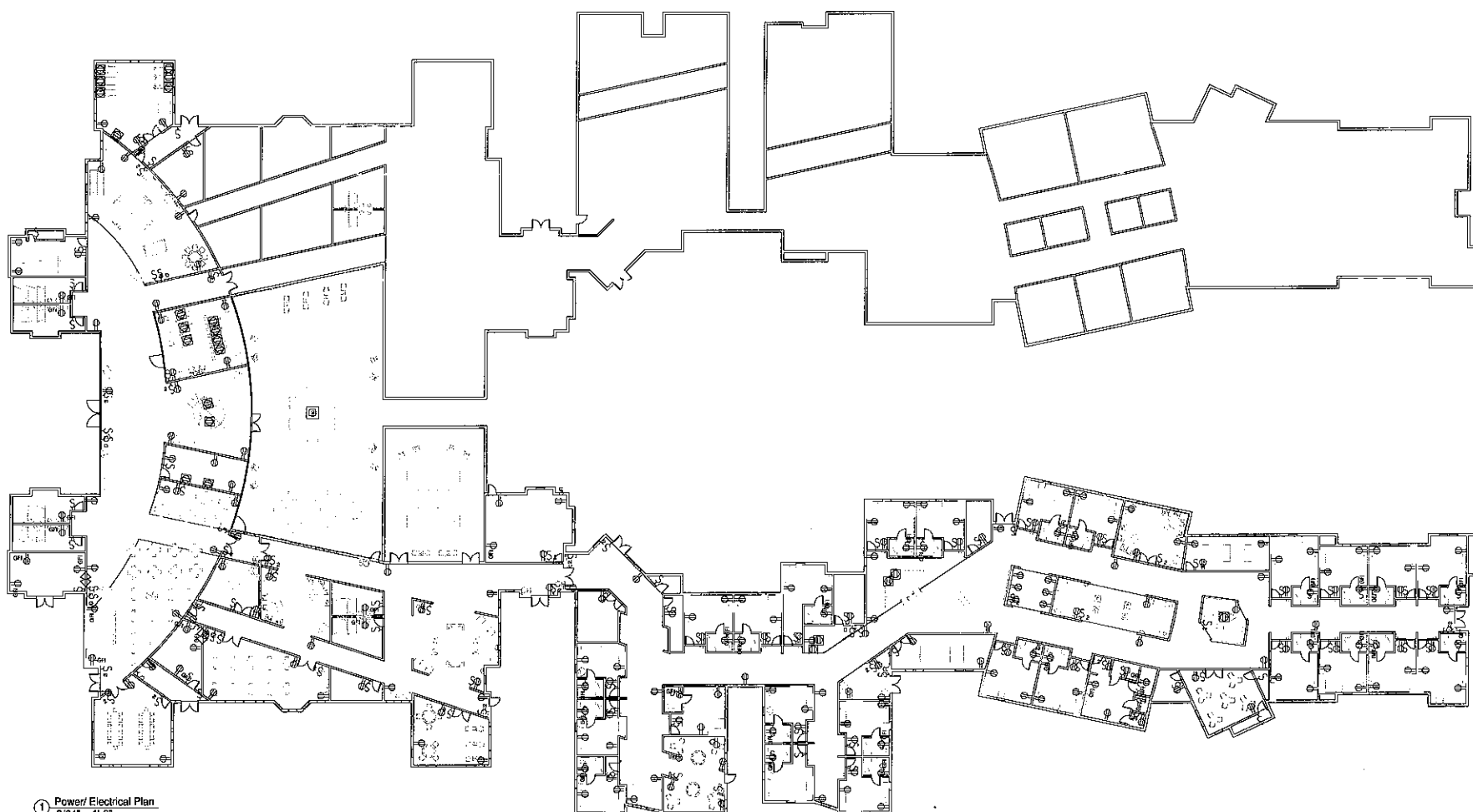
SUNRAYS  
SENIOR LIVING COMMUNITY

Sections

Project number	1
Date	4/24/15
Drawn by	LAS
Checked by	HEGDE
<b>A9</b>	
Scale	As indicated

NOT FOR CONSTRUCTION

4/15/2015 2:40:38 PM



① Power/ Electrical Plan  
3/84" = 1'-0"

GENERAL NOTES:  
 ALL OUTLETS 18" AFF UNLESS OTHERWISE NOTED  
 ALL SWITCHES 54" AFF UNLESS OTHERWISE NOTED  
 COUNTER HEIGHT OUTLET TO BE 30" AFF  
 TV OUTLETS TO BE 72" AFF

- SYMBOL KEY:
- ⊞ FLOOR DUPLEX RECEPTACLE OUTLET
  - ⊞ DUPLEX RECEPTACLE OUTLET
  - ⊞ GROUND FAULTY INTERRUPTER DUPLEX OUTLET
  - ⊞ DOUBLE SWITCH
  - ⊞ DIMMER SWITCH
  - ⊞ SINGLE SWITCH
  - ⊞ TRIPLE SWITCH
  - ⊞ CARD READER

NOT FOR CONSTRUCTION

**TEXAS STATE UNIVERSITY**  
*The rising STAR of Texas*

DEPARTMENT OF INTERIOR DESIGN

STUDIO IV  
 CONTEMPORARY DESIGN  
 HEGDE  
 SPRING 2015

**NOT FOR CONSTRUCTION**

SUNRAYS  
 SENIOR LIVING COMMUNITY

Power Plan

Project number 1  
 Date 4/28/15  
 Drawn by LAS  
 Checked by HEGDE

**A-10**

Scale 3/84" = 1'-0"

4/28/15 8:08 AM

**NOT FOR CONSTRUCTION**

SUNRAYS

SENIOR LIVING COMMUNITY

Furniture Specs

Project number 1  
Date 4/28/15  
Drawn by LAS  
Checked by HEGDE

A-11

Scale

4/28/2015 4:00:07 PM

Furniture Specifications  
Project: Lakeline Center Learning Center

Image	Key	Code	Quantity	Description	Manufacturer	Style/Pattern	Fabric/Color	Notes
	CH-1	9	Dimensions: 32"W x 31"D x 38"H 24"W x 27.5"D x 19.5"H	Kivulu	Sassat Lounge Chair #SAR20A1B	Keshu Brck Birch		
	CH-2	28	Dimensions: 25"W x 20"D x 43"H 19.5"H x 21.25"W x 15.5"D x 20.5"H	Flanzeel Senior Living	HC012-12 Cordella Chair	COM Fairfield Fabrics Darling Jazzberry		
	CH-3	11	Dimensions: 28"W x 23"D x 38"H 20.5"W x 19.5"D x 19.5"H	Kivulu	Presidio Chair	COM Fairfield Fabrics Carma Poppy		
	CH-4	24	Two-Seat 30.5"H x 49"W x 27"D	Cozzesse	Collaborative #8 Sidekick Indoor/Outdoor	COM Fairfield Fabrics Anastasia Sunbleach	With 2 Arms	
	CH-5	8	Dimensions: 28"D x 17"W x 17.25"H	Cozzesse	Coca Modular Seating-Wedge	COM Fairfield Fabrics Carma Single Air		
	CH-6	6	Portland Chair Dimensions 34.5"W x 33"D x 40.5"H SH 19" AH 26" 12" SW 22" 12" SD 21"	ADM-Alan Line	Model 2401 (2401 Portland Chair)	COM Fairfield Fabrics Echo Flame	COM 5 yrs	
	CH-7	132	Dimensions: 40.5" x 42.5" x 43.5" 40.5" x 41.5" x 41.5" x 41.5" x 41.5"	Fairfield Senior Living	5749-04 Arm Chair	COM Fairfield Fabrics Austin Berry	No casters, no nail-head trim	
	CH-8	12	Dimensions: 40.5" x 42.5" x 43.5" 40.5" x 41.5" x 41.5" x 41.5" x 41.5"	Fairfield Senior Living	5749-05 Bar Stool	COM Fairfield Fabrics Austin Berry	No nail-head trim	
	T-1	7	Dimensions: 38"W x 18"D x 20"H	Kivulu	Carra II Coffee Table	Warm Walnut Finish		
	T-2	43	Game Table Dimensions 42"W x 42"D x 30"H	ADM-Alan Line	Model TD142 (TD142 Game Table)	Warm Walnut Finish		
	T-3	7	Dimensions: 24"W x 13"D x 30"H	Kivulu	Mozzafane Console Table	Warm Walnut Finish		
	T-4	33	Dimensions: 24"W x 24"D x 29"H	Kivulu	Aezro End Table	Warm Walnut Finish		

	T-5	2	Dimensions: 60"W x 60"D x 30"H	Kivulu	Dorali Entry Table	Warm Walnut Finish	All round tables over 48" will have a center seam	
	BN-1	2	Dimensions: 60" x 41.5" x 12" x 11.5" x 12"	Fairfield Senior Living	104-10 Bench	COM Fairfield Fabrics Carma Cobs		
	BN-2	26	Luggage Bench Dimensions 42"W x 19"D x 22.5"H SH 18"	ADM-Alan Line	Model 1304 (1304 Bench)	COM Fairfield Fabrics Austin Berry	COM 2 yrs	
	S-1	14	Close Sofa Dimensions 83.5"W x 30.5"D x 31.5"H x 28" SH 19" SW 68" SD 18"	ADM-Alan Line	Model 1532-000 (Rolled Arm Sofa)	Gregg Meyer	COM 11 yrs	
	T-6	8	Chenille Game Table Dimensions: 2' x 2'	ADM-Alan Line	T60V126 (Cone Table)	Walnut Finish		
	T-7	8	Wood Buffalo Table Dimensions 3'D	ADM-Alan Line	Model V632R	Walnut Finish		
	W-1	26	COM Wardrobe	ADM-Alan Line	6210-0221	Walnut Finish		
	S-2	7	Dimensions: 48.5"W x 23"D x 36"H 41.5"W x 19.5"D x 19.5"H	Kivulu	Presidio Love Seat	COM Fairfield Fabrics Carma Poppy		
	R-1	1	Dimensions: 142"W x 48.5"H x 107"D	OPM	55314	Cherry Finish		
	R-2	1	Dimensions: 72"W x 45.5"H x 32"D	OPM	55300	Cherry Finish		
	T-8	5	Dimensions: 30"H x 58"W x 57.75"D x 25.5"W	Hokman Contract	509413 Niagara Pub & Game Table	Rubio Cherry		
	CH-9	12	Dimensions: 24.5"W x 23"D x 48"H 20.5"W x 19.5"D x 19.5"H x 28.5"H	Kivulu	Araza Rodar Chair	Cherry Finish	Outdoor Seating	
	OT-1	24	Dimensions: 28"W x 28.5" x 30.5"H	Kivulu	Pedestal Twin T Base Wheelchair TBLDBW	Warm Walnut Finish		
	CH-10	113	Dimensions: 24"W x 28.5" x 35.5"H x 20.5"W x 19.5"D x 19.5"H	Kivulu	Symphony Stacking Chair 931127	COM Fairfield Fabrics Anastasia Sunbleach	Add hand grip at top of back	

NOT FOR CONSTRUCTION

**Floor Finish Specifications**  
**Project: Lakeline Station Learning Center**

Key: CPT-Carpet Tile  
 LVT-Luxury Vinyl Tile  
 RB-Rubber Baseboard  
 P-Paint

Mark	Description	Manufacturer	Style/Pattern	Color	Installation
LVT-1	Simplese Laminate Vinyl 5.9" x 49" x 4mm thick	Mohawk Flooring	Toasted Walnut- Shade Medium/Dark		Method Uniclic
LVT-2	Noblesse Laminate Vinyl 5.9" x 49" x 4mm thick	Mohawk Flooring	Merlot Cherry - Shade Medium/Dark		Method Uniclic
LVT-3	Meridian Luxury Vinyl 18" x 18" x 1/8"	Earthworks Flooring	SKM 8322		Nominal
LVT-4	Ceramic Rivergrass 12" x 24"	Earthworks Flooring	Canadian Rye		Rectified
LVT-5	Crossbridge Tile 18" x 36" x 3mm thick	Mohawk Flooring	Bronze Kona- Shade Dark		Glue Down
CPT-1	Filter Tile 5T074 24" x 24"	Shaw Contract Group	73880		Monolithic
CPT-2	Color Form Tile 5T112 9" x 36"	Shaw Contract Group	81668		Monolithic
CPT-3	Value Tile 5T110 9" x 36"	Shaw Contract Group	7436		Monolithic
CPT-4	Pause Tile 5T083	Shaw Contract Group	83407		Monolithic
RB-1	Paint	Sherwin Williams	SW 6148	Wool Skein	
RB-2	Paint	Sherwin Williams	SW 6149	Relaxed Khaki	



DEPARTMENT OF  
 INTERIOR DESIGN

STUDIO IV  
 CONTEMPORARY DESIGN  
 HEGDE  
 SPRING 2015

**NOT FOR  
 CONSTRUCTION**

**SUNRAYS  
 SENIOR LIVING  
 COMMUNITY**

**Floor Finish  
 Specs**

Project number 1  
 Date 4/28/15  
 Drawn by LAS  
 Checked by HEGDE

**A-12**

Scale

NOT FOR CONSTRUCTION

4/28/15 4:08 PM

**Wall Finish Specifications**  
Project: Lakeline Station Learning Center

Key:  
PT- Paint Color  
BR- Brick Stone  
F- Partition Fixture

Mark	Description	Manufacturer	Style/Pattern	Color	Installation	Notes
BR-1	Thin Brick Veneer	Brick It	Clinker Bricks	Shinnecock Red	Glue Adhesive	
PT-1	Paint	Sherwin Williams	SW 6147	Panda White		
PT-2	Paint	Valspar	1010-3	Heirloom Red		
PT-3	Paint	Valspar	1010-5	Spanish Tile		
PT-4	Paint	Valspar	1011-3	Quile Red		
PT-5	Paint	Valspar	2009-2	Caramel Cream		
PT-6	Paint	Valspar	2010-5	Orange Maple		
PT-7	Paint	Olympic	A28-6	Teaberry Blossom		
PT-8	Paint	Olympic	B62-6	Deep Verdian		
PT-9	Paint	Olympic	B59-6	Caribbean Holiday		
F-1	Metal Circular Art	NanJing PengAo Metal Décor	Pengwelo	Stainless Steel		

**NOT FOR  
CONSTRUCTION**

SUNRAYS

SENIOR LIVING  
COMMUNITY

Wall Finish  
Specs

Project number	1
Date	4/28/15
Drawn by	LAS
Checked by	HEGDE
<b>A-13</b>	
Scale	

NOT FOR CONSTRUCTION

**NOT FOR CONSTRUCTION**

SUNRAYS

SENIOR LIVING COMMUNITY

Lighting Specs

Project number 1  
Date 4/28/15  
Drawn by LAS  
Checked by HEGDE

**A-14**

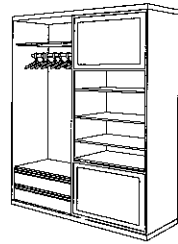
Scale

4/27/2015 4:15:30 PM

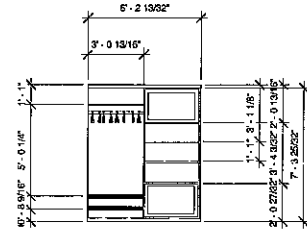
Lighting Specifications  
Project: Lakeline Station Learning Center

Image	Key	Code	Quantity	Description	Manufacturer	Style/Item	Finish	Notes
	P-Pendant T-Troffer R-Recessed	R-1	320	Recessed Can Downlight: Round 8" diameter, Incandescent 42 Watts 120V	Philips	8" Performance Reflector Trim Downlight	Specular Clear	Mounted at various heights based on the ceiling heights in various areas
	S-Strip Flush Mount Narrow Strip C-Cove	SN-1	6	Recessed 30 Watt 3 3/16" width, 4 3/8" depth 8" length	Cooper Industries	Cooper NeoRay Straight & Narrow 23XR	Aluminum	Placed horizontal on ceiling
		SN-2	10	Recessed 30 Watt 3 3/16" width, 4 3/8" depth, 10" length	Cooper Industries	Cooper NeoRay Straight & Narrow 23XR	Aluminum	Placed horizontal on ceiling
		SN-3	2	Recessed 30 Watt 3 3/16" width, 4 3/8" depth, 12" length	Cooper Industries	Cooper NeoRay Straight & Narrow 23XR	Aluminum	Placed horizontal on ceiling
		SN-4	10	Recessed 30 Watt 3 3/16" width, 4 3/8" depth, 15" length	Cooper Industries	Cooper NeoRay Straight & Narrow 23XR	Aluminum	Placed horizontal on ceiling
		P-1	40	Pendant 5' x 6 5/8" Central Mount LED 53.75" ID x 59.625" OD	Delray Lighting	Cylindro III 6806 CW-Cool White 4700-6500K	Aluminum W- White Finish	
		P-2	2	4 lamp Compact Fluorescent 28" x 9" x 5.3" 12" 69" length	Delray Lighting	G-Uplight 3812	Aluminum	
		P-3	28	Pendant 4' long with elliptical body 9.63" x 4.63" x 48" all on	Focal Point	Theory FTHPL LLP LL1 2C CLV80 CP	Aluminum	
		P-4	20	Suspended 20" x 17" x 4" Surface Mount	Peerless	Contrail Paralela PLM9 Indirect-Direct T5	Satin Anodized with Standard White Paint	
		P-5	9	Suspended 4.8" x 1.1" x 8"	Delray Lighting	Tambour Stick STB/13 T5 Single Lamp Ceiling Stem Mount	Aluminum with Matte Anodized Finish	2 hanging poles on bar ceiling attachment
		C-1	18	48" linear uplight strip for cove lighting, LED, 40.5 Watts	Philips	Fluxstream 4129	Aluminum	
		S-1	16	Suspended 8" x 2" x 8-1/8" Lightedge Angular Shallow ID EGSAM4 Indirect-Direct T5	Peerless	Lightedge Angular Shallow ID EGSAM4 Indirect-Direct T5	Satin Anodized Finish	
		S-2	8	Suspended 8" x 2" x 8-1/8" Lightedge Curved Shallow ID EGSCM4 Indirect-Direct T5	Peerless	Lightedge Curved Shallow ID EGSCM4 Indirect-Direct T5	Satin Anodized Finish	
		W-1	48	Perimeter 4' x 7" x 2" LED	Focal Point	Trace FTRLAC Wall Wash 3500K	Matte White Housing	

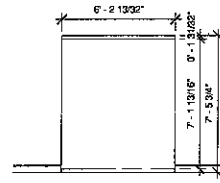
NOT FOR CONSTRUCTION



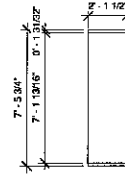
⑤ Wardrobe



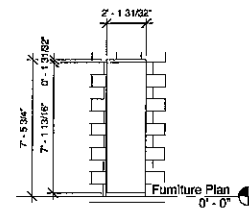
② Wardrobe Front  
1/4" = 1'-0"



① Wardrobe Back  
1/4" = 1'-0"

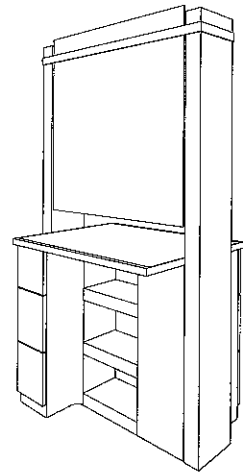


③ Wardrobe Left  
1/4" = 1'-0"

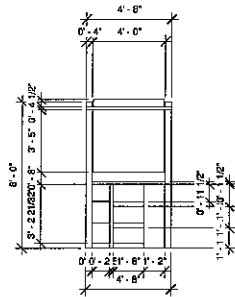


④ Wardrobe Right  
1/4" = 1'-0"

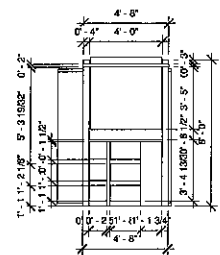
WARDROBE CUSTOM DETAIL



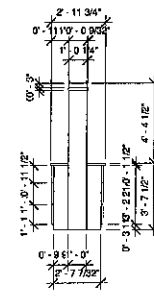
⑩ Salon Mirror



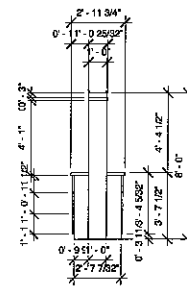
⑥ Salon Mirror Front  
1/4" = 1'-0"



⑦ Salon Mirror Back  
1/4" = 1'-0"



⑧ Salon Mirror Left  
1/4" = 1'-0"



⑨ Salon Mirror Right  
1/4" = 1'-0"

SALON MIRROR CUSTOM DETAIL

NOT FOR CONSTRUCTION

TEXAS STATE UNIVERSITY

The rising STAR of Texas

DEPARTMENT OF INTERIOR DESIGN

STUDIO IV  
CONTEMPORARY DESIGN  
HEGDE  
SPRING 2015

NOT FOR CONSTRUCTION

SUNRAYS

SENIOR LIVING COMMUNITY

Custom Details

Project number: 1  
Date: 4/28/15  
Drawn by: LAS  
Checked by: Checker

A-15

Scale: 1/4" = 1'-0"

4/28/2015 9:27:46 PM